

IC Recorder

Operating Instructions



Owner's Record

The model number is located at the rear panel and the serial number is located at the rear panel. Record these numbers in the space provided below. Refer to these numbers whenever you call upon your Sony dealer regarding this product.

Model No. _____
Serial No. _____

You are cautioned that any changes or modifications not expressly approved in this manual could void your authority to operate this equipment.

Refer to the Help Guide

This is the Operating Instructions, which provides you with instructions on the basic operations of the IC recorder. The Help Guide is an online manual. Refer to the Help Guide when you would like to know further details, operations and possible solutions when a problem occurs.

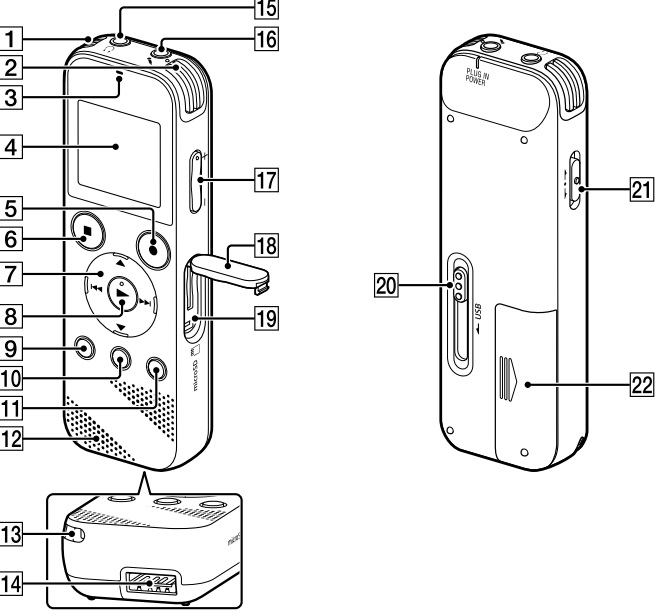
http://rd1.sony.net/help/icd/p47/h_uc/



Check the supplied items

- IC Recorder (1)
- LR03 (size AAA) alkaline batteries (2)
- Operating Instructions (this sheet)
- Warranty card
- Application Software, Sound Organizer 2 (Installer file stored in the built-in memory so that you can install it to your computer.)

Parts and controls

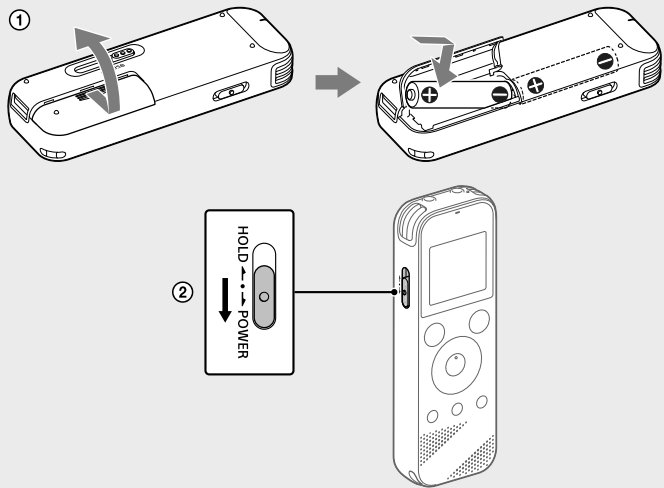


- 1 Built-in microphones (stereo) (L)
- 2 Built-in microphones (stereo) (R)
- 3 Operation indicator
- 4 Display window
- 5 ●REC/PAUSE (record/pause) button
- 6 ■STOP button
- 7 Control button (▲ DPC (Digital Pitch Control), ▼◀ A-B (repeat A-B)/▶ (review/fast backward), ▶▶ (cue/fast forward))
- 8 ▶ (play/enter) button*
- 9 ◀ BACK/ ▶ HOME button (* : press, ◀ : press and hold)
- 10 T-MARK (track mark) button
- 11 OPTION button
- 12 Built-in speaker
- 13 Strap hole (No strap is supplied with your IC recorder.)
- 14 USB connector compartment
- 15 3 (headphones) jack
- 16 (microphone) (PLUG IN POWER) jack*
- 17 VOL +/- (volume +/-) button*
- 18 Slot cover
- 19 microSD card slot (The card slot is located under the cover.)
- 20 USB slide lever
- 21 HOLD+POWER switch
- 22 Battery compartment

* The ▶ (play/enter) button, VOL +/- (volume +/-) button, and (microphone) (PLUG IN POWER) jack have a tactile dot. Use the tactile dot as a reference when operating the IC recorder.

Let's try out your new IC recorder

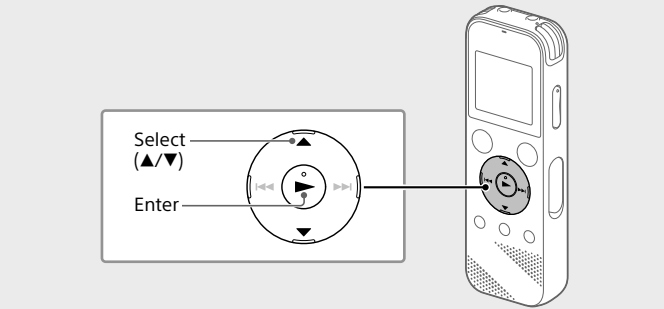
Power on



- 1 Slide and lift the battery compartment lid, insert LR03 (size AAA) alkaline batteries with the correct polarity, and close the lid.
- 2 Turn the power on.
To turn the power on
Slide and hold the HOLD+POWER switch in the direction of "POWER" until the window display appears.
To turn the power off, slide the HOLD+POWER switch to "POWER" and hold it until "Power Off" appears on the display window.
To prevent unintentional operations (HOLD)
Slide the HOLD+POWER switch in the direction of "HOLD."

To release the IC recorder from the HOLD status, slide the HOLD+POWER switch towards the center.

Initial settings



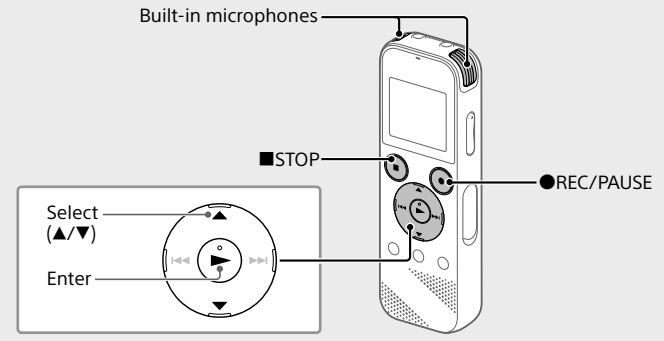
When you turn on your IC recorder for the first time, the "Configure Initial Settings" screen appears on the display window. You can then select the display language, set the clock, and turn on/off the beep sound.

- 1 Select "Yes" to start the initial settings.
- 2 Select the display language.
You can select from the following languages: English*, Español (Spanish), Français (French)
* Default setting
- 3 Set the current year, month, day, hour, and minute.

To go back to the previous clock setting item, press BACK/HOME.
- 4 Select "Next."
- 5 Select "ON" or "OFF" to turn on or off the beep sound.
When the initial settings finish, the completion message and then the HOME menu screen appears.

- You can change any of the initial settings at any time later. For detailed instructions, refer to the Help Guide.
- When you re-insert batteries, or when you replace batteries with new ones, the clock setting display appears, and the approximate date and time when you last operated the IC recorder before removing the batteries is displayed. Set the clock to the current time again.
- To check the current time after the initial settings, slide the HOLD+POWER switch in the direction of "HOLD."

Record



- Before you start using the IC recorder, make sure that the HOLD+POWER switch is at the center dot position.
- You can select a recording scene for each situation by selecting "Scene Select" in the OPTION menu.

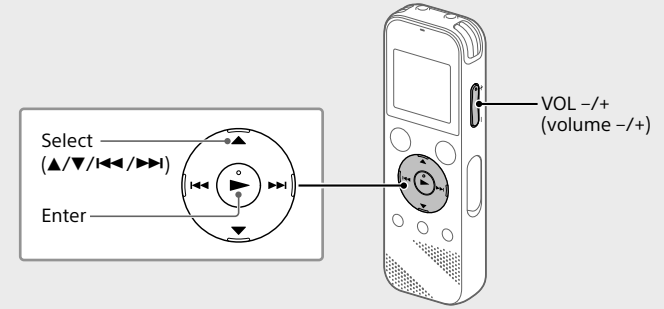
Recorded audio files are stored in "FOLDER01" under "Recorded Files" by default.

- 1 Select "Record" from the HOME menu.
The recording standby screen appears on the display window.
- 2 Select the folder you want to store the recorded files.
To store the audio files in a folder other than "FOLDER01," create a new folder and change the file storage destination folder to the new folder. For detailed instructions, refer to the Help Guide.
- 3 Turn the IC recorder so that its built-in microphones point in the direction of the recording source.
- 4 Press ●REC/PAUSE.
Recording starts, "REC" appears on the display, and the operation indicator lights in red.
Pressing and holding the ●REC/PAUSE does not start recording. Doing so makes your IC recorder pause for recording.

During recording, the recording level guide (A) is displayed. Adjust the orientation of the built-in microphones, the distance from the sound source, or the sensitivity setting of the microphones so that the input level indicated by ■ stays at 3/6 or 4/6, which fits within the optimum range, as illustrated above.

- 5 Press ■STOP to stop recording.
"Saving..." appears on the display, and then the display returns to the record standby screen.
After you stopped recording, you can press ▶ to play the file you have just recorded.

Listen

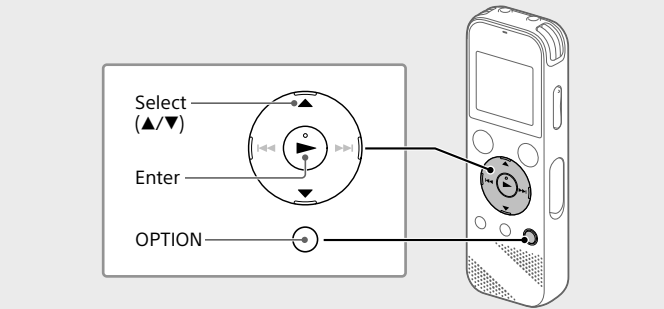


Recorded audio files are stored in "FOLDER01" under "Recorded Files" by default.

- 1 Select "Recorded Files" from the HOME menu.
- 2 Select "Folders" - "Built-In Memory" - "FOLDER01," and then press ▶.
To listen to recorded audio files stored on a microSD card, select "Folders" - "SD Card."
- 3 Select your desired file.
Playback starts.
- 4 Press ■STOP to stop playback.
To adjust the volume, press VOL +/- to adjust the volume.
The built-in speaker is provided mainly for checking recorded audio files. If you find the volume not loud enough or have difficulty in understanding what you hear, use headphones (not supplied).
When you select "Recorded Files," the file search categories of the stored files appear on the display window. You can select one of the search categories from "Latest Recording," "Search by REC Date," "Search by REC Scene," or "Folders."

To add a track mark
You can add a track mark at a point at which you want to divide a file later or locate during playback. You can add a maximum of 98 track marks to each file.
You can also add track marks during a recording.

Delete

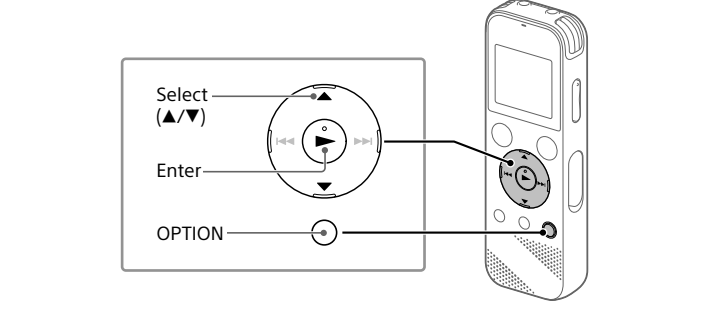


- Note
Once a file is deleted, you cannot restore it.
- 1 Select the file you want to delete from the list of recorded files or playback the file you want to delete.
- 2 Select "Delete a File" from the OPTION menu.
- 3 Select "Yes."
"Delete?" appears and the selected file starts playing for your confirmation.

*"Please Wait" appears and stays until the selected file is deleted.

Using the OPTION menu

You can use the OPTION menu to perform a variety of functions, including changing the settings of your IC recorder. The available items differ depending on the situation.

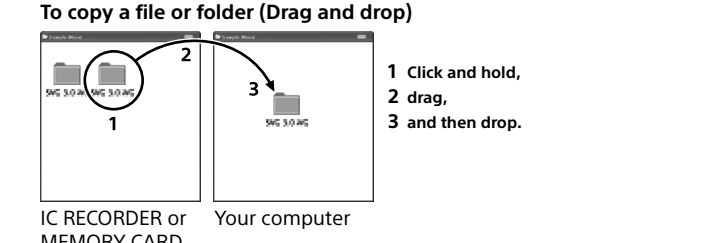


- 1 Select your desired function from the HOME menu, and then press OPTION.
- 2 Select the menu item for which you want to change the setting.
- 3 Select your desired setting option.

Copying files from your IC recorder to a computer

You can copy the files and folders from your IC recorder to a computer to store them.

- 1 Slide the USB slide lever in the direction of the arrow, and insert the USB connector into the USB port of a running computer.
- 2 Drag and drop the files or folders you want to copy from "IC RECORDER" or "MEMORY CARD" to the local disk on the computer.



- 3 Make sure that "Accessing" is not displayed on the display window of your IC recorder, and then disconnect the IC recorder from the computer.

Installing Sound Organizer 2

Install Sound Organizer on your computer. Sound Organizer allows you to exchange files between your IC recorder and your computer. Songs imported from music CDs and other media, MP3 and other audio files imported to a computer can also be played and transferred to the IC recorder.

- Notes
• Sound Organizer is compatible with Windows computers only. It is not compatible with Mac.
• This IC recorder is compatible with Sound Organizer 2 only.
• If you format the built-in memory, all data stored there will be deleted. (The Sound Organizer software will also be deleted.)

When installing Sound Organizer, log in to an account with administrator privileges.

- 1 Slide the USB slide lever in the direction of the arrow, and insert the USB connector into the USB port of a running computer.
- 2 Make sure the IC recorder is successfully detected by the computer.
"Connecting" appears and stays on the IC recorder's display window while the IC recorder is connected to the computer.
- 3 Go to the [Start] menu, click [Computer], and then double-click [IC RECORDER] - [FOR WINDOWS].
- 4 Double-click [SoundOrganizer_V2001] (or [SoundOrganizer_V2001.exe]).
Follow the computer's on-screen instructions.
- 5 Make sure that you accept the terms of the license agreement, select [I accept the terms in the license agreement], and then click [Next].
- 6 When the [Setup Type] window appears, select [Standard] or [Custom], and then click [Next].
Follow the instructions on the screen and set the installation settings when you select [Custom].
- 7 When the [Ready to Install the Program] window appears, click [Install].
The installation starts.
- 8 When the [Sound Organizer has been installed successfully.] window appears, check [Launch Sound Organizer 2 Now], and then click [Finish].

- Note
You may need to restart your computer after installing Sound Organizer.

Precautions

On power
DC 3.0 V: Use two LR03 (size AAA) alkaline batteries
DC 5.0 V: when using USB AC adaptor
Rated current consumption: 500 mA

On safety
Do not operate the unit while driving, cycling or operating any motorized vehicle.

On handling
• Do not leave the unit in a location near heat sources, or in a place subject to direct sunlight, excessive dust or mechanical shock.
• Should any solid object or liquid fall into the unit, remove the batteries and have the unit checked by qualified personnel before operating it any further.
• When using your IC recorder, remember to follow the precautions below in order to avoid warping the cabinet or causing the IC recorder to malfunction.
- Do not sit down with the IC recorder in your back pocket.
- Do not put your IC recorder into a bag with the headphones/earphones cord wrapped around it and subject the bag to strong impact.
• Be careful not to allow water to splash on the unit. The unit is not waterproof. In particular, be careful in the following situations.
- When you have the unit in your pocket and go to the bathroom, etc.
- When you bend down, the unit may drop into the water and may get wet.
- When you use the unit in an environment where the unit is exposed to rain, snow, or humidity.
- In circumstances where you get sweaty. If you touch the unit with wet hands or if you put the unit in the pocket of sweaty clothes, the unit may get wet.
• Listening with this unit at high volume may affect your hearing. For traffic safety, do not use this unit while driving or cycling.
• You may feel pain in your ears if you use the headphones when the ambient air is very dry.
This is not because of a malfunction of the headphones, but because of static electricity accumulated in your body. You can reduce static electricity by wearing non-synthetic clothes that prevent the emergence of static electricity.

On noise
• Noise may be heard when the unit is placed near an AC power source, a fluorescent lamp or a mobile phone during recording or playback.
• Noise may be recorded when an object, such as your finger, etc., rubs or scratches the unit during recording.

On maintenance
To clean the exterior, use a soft cloth slightly moistened in water. Then use a soft dry cloth to wipe the exterior. Do not use alcohol, benzine or thinner.
If you have any questions or problems concerning your unit, please consult your nearest Sony dealer.

WARNING

Do not expose the batteries (battery pack or batteries installed) to excessive heat such as sunshine, fire or the like for a long time.

CAUTION

Risk of explosion if battery is replaced by an incorrect type. Dispose of used batteries according to the instructions.

FOR UNITED STATES CUSTOMERS. NOT APPLICABLE IN CANADA, INCLUDING THE PROVINCE OF QUEBEC. POUR LES CONSOMMATEURS AUX ÉTATS-UNIS. NON APPLICABLE AU CANADA, Y COMPRIS LA PROVINCE DE QUÉBEC.

INFORMATION
This equipment has been tested and found to comply with the limits for a Class B digital device, pursuant to Part 15 of the FCC Rules. These limits are designed to provide reasonable protection against harmful interference in a residential installation.
This equipment generates, uses and can radiate radio frequency energy and, if not installed and used in accordance with the instructions, may cause harmful interference to radio communications. However, there is no guarantee that interference will not occur in a particular installation. If this equipment does cause harmful interference to radio or television reception, which can be determined by turning the equipment off and on, the user is encouraged to try to correct the interference by one or more of the following measures:
- Reorient or relocate the receiving antenna.
- Increase the separation between the equipment and receiver.
- Connect the equipment into an outlet on a circuit different from that to which the receiver is connected.
- Consult the dealer or an experienced radio/TV technician for help.

If you have any questions about this product, you may call: Sony Customer Information Service Center 1-800-222-7669 or http://www.sony.com/

Declaration of Conformity
Trade Name : SONY
Model : ICD-PX470
Responsible Party : Sony Electronics Inc.
Address : 16535 Via Esprillo, San Diego, CA 92127 USA
Telephone Number : 858-942-2230
This device complies with part 15 of the FCC Rules. Operation is subject to the following two conditions: (1) This device may not cause harmful interference, and (2) this device must accept any interference received, including interference that may cause undesired operation.

Specifications

Capacity (User available capacity)*1,2
4 GB (approx. 3.20 GB = 3,435,973,837 Byte)

Maximum recording time (Built-in memory)	
The maximum recording time of all the folders is as follows.	
LPCM 44.1 kHz/16 bit	5 hours 20 minutes
MP3 192 kbps*3	39 hours 45 minutes
MP3 128 kbps	59 hours 35 minutes
MP3 48 kbps (MONO)	159 hours

■ Note
When you are going to record continuously for a long time, you may have to replace the batteries with new ones in the middle of recording. For details on the battery life, see Battery Life.
The maximum recording time in this topic is for your reference only.

Battery Life			
When using LR03 (5G) (size AAA) alkaline batteries*4			
REC Mode	Recording	Playback with the built-in speaker	Playback with the headphones
LPCM 44.1 kHz/16 bit	Approx. 40 hours	Approx. 16 hours	Approx. 37 hours
MP3 192 kbps	Approx. 55 hours	Approx. 18 hours	Approx. 43 hours

When using NH-AAA rechargeable batteries*4			
REC Mode	Recording	Playback with the built-in speaker	Playback with the headphones
LPCM 44.1 kHz/16 bit	Approx. 34 hours	Approx. 12 hours	Approx. 29 hours
MP3 192 kbps	Approx. 40 hours	Approx. 14 hours	Approx. 34 hours

Dimensions (w/h/d) (not incl. projecting parts and controls)
Approx. 1.51 inches (38.3 mm) x 4.50 inches (114.1 mm) x 0.76 inches (19.3 mm)

Mass	
Approx. 2.7 oz (74 g) (including two LR03 (size AAA) alkaline batteries)	
Temperature/Humidity	
Operating temperature	41 °F - 95 °F (5°C - 35°C)
Operating humidity	25% - 75%
Storage temperature	14 °F - 113 °F (-10°C - +45°C)
Storage humidity	25% - 75%

Compatible memory cards
microSDHC cards from 4 GB to 32 GB

■ Note
microSDXC cards are not compatible with your IC recorder.

*1 A small amount of the internal memory is used for file management and therefore not available for user storage.
*2 When the built-in memory is formatted with the IC recorder.
*3 Default settings for the recording scenes.
*4 Measured values acquired under our measurement conditions. These values may decrease depending on the usage conditions.

Trademarks

- Microsoft, Windows and Windows Media are registered trademarks or trademarks of Microsoft Corporation in the United States and/or other countries.
- macOS is a trademark of Apple Inc., registered in the USA and other countries.
- MPEG Layer-3 audio coding technology and patents licensed from Fraunhofer IIS and Thomson.
- microSD, microSDHC and microSDXC logos are trademarks of SD-3C, LLC.



All other trademarks and registered trademarks are trademarks or registered trademarks of their respective holders. Furthermore, "TM" and "®" are not mentioned in each in this manual.

This product is protected by certain intellectual property rights of Microsoft Corporation. Use or distribution of such technology outside of this product is prohibited without a license from Microsoft or an authorized Microsoft subsidiary.

The "Sound Organizer 2" uses software modules as shown below: Windows Media Format Runtime

License

Notes on the License
This IC recorder comes with software that are used based on licensing agreements with the owners of that software. Based on requests by the owners of copyright of these software applications, we have an obligation to inform you of the following. Please read the following sections.
Licenses (in English) are recorded in the internal memory of your IC recorder. Establish a Mass Storage connection between the IC recorder and a computer to read licenses in the "LICENSE" folder.

On GNU GPL/LGPL applied software
The software that is eligible for the following GNU General Public License (hereinafter referred to as "GPL") or GNU Lesser General Public License (hereinafter referred to as "LGPL") are included in the IC recorder. This informs you that you have a right to have access to, modify, and redistribute source code for these software programs under the conditions of the supplied GPL/LGPL.
Source code is provided on the web. Use the following URL to download it. http://www.sony.net/Products/Linux/
We would prefer you do not contact us about the contents of source code. Licenses (in English) are recorded in the internal memory of your IC recorder. Establish a Mass Storage connection between the IC recorder and a computer to read licenses in the "LICENSE" folder.

