



K668
USER'S GUIDE



AM Version:20-I

CONTENTS

COMPUTER SETUP	3-8
RECORDING SOFTWARE SETTINGS	8-10
STAND INSTALLATION & ADJUSTMENT	10
IMPORTANT NOTICE	11

What's in the Box?

- 1 X Anti Wind Foam Cap
- 1 X Metal Tripod Stand
- 1 X User Manual
- 1 X USB Microphone with Cable



CONTACT US

Get Social: 

Facebook page : <http://bit.ly/FifinePage>

Contact Info: 

E-mail : web@fifine.cc

Please take a few minutes to watch the video before you start using the microphone.

Operation video : <http://bit.ly/k668problemsolving>

More product FAQs can be found on the website.

Company Website : <https://fifinemicrophone.com/>

If you need instructions in other languages, please contact us.

WARRANTY

Easily get a 2-year extended warranty with online registration within 90 days of purchase.

1. Input the link : <https://fifinemicrophone.com/>
2. Please roll down to the bottom of the page, fill in E-mail address and submit it .

3. Check your inbox or spam to confirm subscription email.
4. After you click the button "Subscribe me to the list" and next "manage your preferences" to finish registration, we will send you the the promo info/discount code for the mic you want and 2-year warranty code as well.
PS: If you cannot update your preferences, just re-do the subscription process.

Specification

Model:	K668
Sensitivity:	-47dB± 3dB
Operation Voltage:	5V
Frequency Response:	50Hz-16KHz
S/N ratio:	More than 70dB
Operating Current:	50mA

Specification

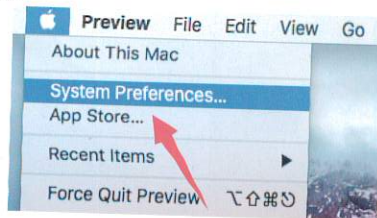
The top of the microphone should face the sound source. No matter how you adjust the angle or position of the mic, make sure the top of mic is pointing at your mouth in order to achieve the best pick up effect.



COMPUTER SETUP

Apple MAC OS

1. Plug the free end of the provided USB cable into the USB port on your computer. Your computer will automatically recognize the USB device and install a driver.
2. To select the K668 as your audio input, first, open your System Preferences.

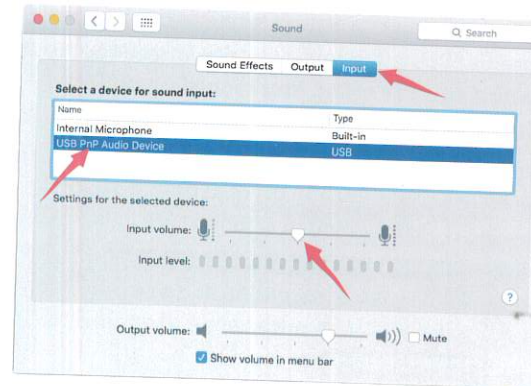


3

3. Next, click Sound to display the Sound preference pane.

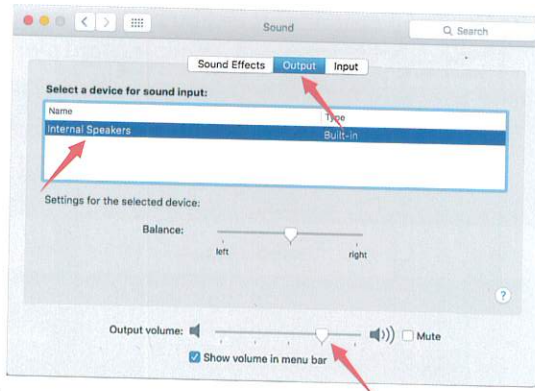


4. Click the output tab and make certain "USB PnP Audio Device" is selected as the default input device. Drag progress bar to adjust volume of output.



5. If you need output your voice from 3.5mm headphone jack of Macbook, choose the output from "Internal Speaker" option. Drag progress bar to adjust volume of output.

4



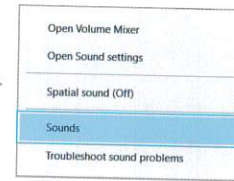
NOTICE:

If you want to monitor your voice in real time through built-in microphone jack of Macbook, you must turn on any recording software first (Audacity for example), make sure to click "Software Playthrough(on)", then click the Record button to begin, otherwise you can not hear any sound when you speak to the mic.

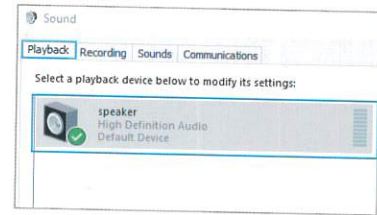
Windows

Please wait for a few secs when first time operation, since driver of microphone takes time to automatically install. There may be no pop-up window or message though. (If plugging receiver in a different USB port, driver installs again). After installation, you can test the mic by speaking to it. If the mic picks up no sound, please follow procedures below.

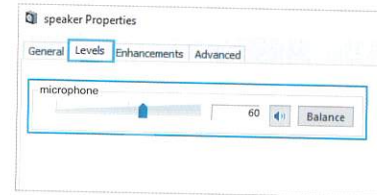
1. Right-click the speaker icon at the bottom right of the screen. Click "Sounds".



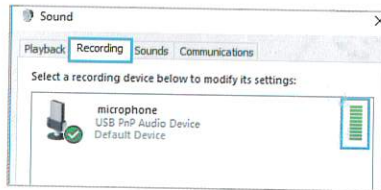
2. Confirm the loudspeaker is open.



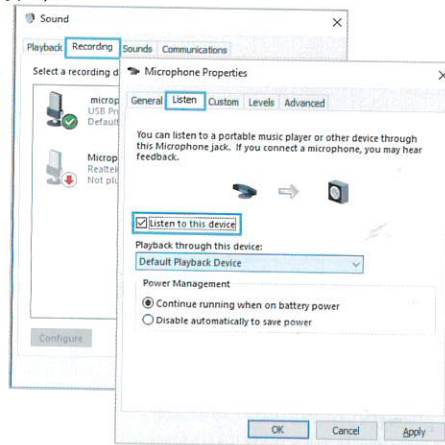
Click the loudspeaker is being used--"Properties"--"levels", drag progress bar to adjust volume of output



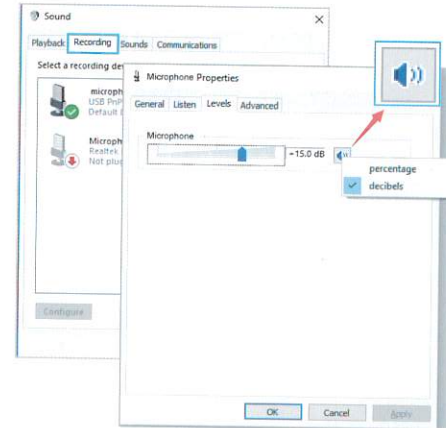
3. Select the Recording tab, and choose "USB PnP Audio Device" as the default device. When you speak to mic, bar-type icon will turn green and bounce. If it remains unchanged, please reset computer and replug in the USB port. If there's still no "USB PnP Audio Device", please contact FIFINE after service.



4. If you want to directly monitor your recording, click Microphone "USB PnP Audio Device"- "Properties"- "Listen"-click "Listen to this device"- "Apply". No sound can be heard through earphone, if you don't follow this procedure. NOTE: Click off "Listen to this device" when you are using any recording software or chatting software (Skype).



5. Double click on the "USB PnP Audio Device" icon to open the Microphone Properties window. Click the speaker icon under the Levels tab. Select the Levels tab (14-20db) when the speaker output maximum volume to adjust microphone level.



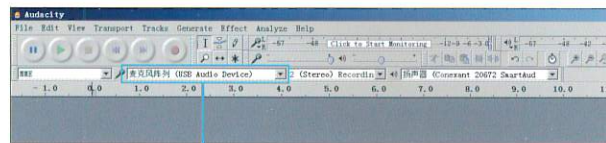
Note: (Applicable for MAC and Windows)

1. If computer prompts that it's unable to identify USB devices, please restart computer and replug the microphone into other USB port.
2. If mic recognized but no sound comes out, please check whether System Sound is mute and whether you have turned volume control on microphone to minimum.
3. If mic recognized but not sound out, and your computer runs windows 10, please go to settings > privacy > microphone and click the Allow apps to access the microphone to ON then restart.

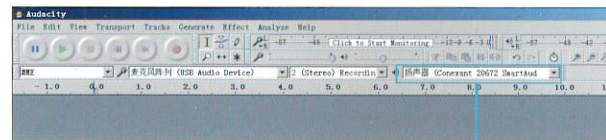
Recording Software Settings

1. Make sure you have the correct input/output selected.
Notice: logging out of AUDACITY (or other recording

software) if you find usb microphone is unavailable. And then plug in mic first, secondly log in software again.

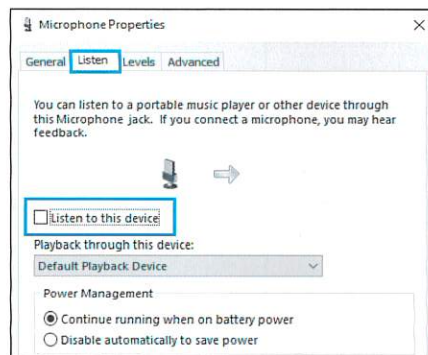


input : USB PnP Audio Device



output : Pls choose your output device as needed

2. Make sure to click off listen to device in your computer system when you are using any recording software, or else your would hear duet of yourself just like too much echo.

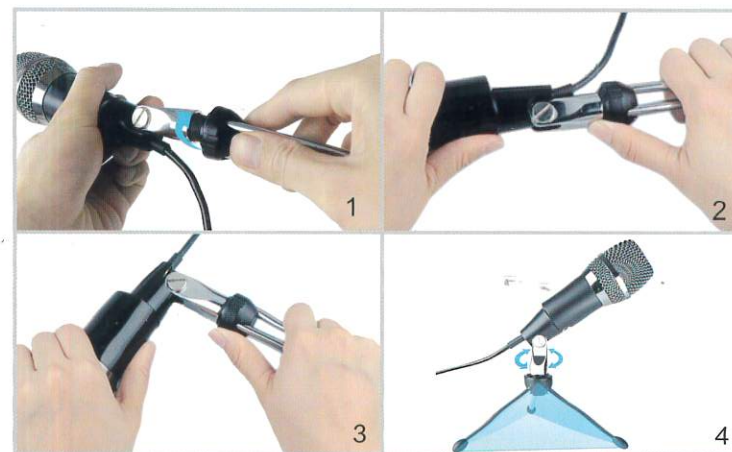


3. There are several ways to improve the recording by using Audacity. Come to FIFINEMICROPHONE.COM, find SUPPORT, click the Tutorial Blogs or type the <https://fifinemicrophone.com/blogs/news> directly to search the better recording solution for your interested subject in our blogs.

4. For windows computers, we recommend audacity, and for Apple computers, you can use Apple's own QuickTime player to test the recording.

Stand Installation And Adjustment

Install the tripod stand with the silver mount of the mic and clockwise rotation the stand to adjust the angle.



IMPORTANT NOTICE

● Setting your software levels

Correct adjustment of microphone level is important for optimum performance. Ideally, the microphone level should be as high as possible without overloading the input of your computer. If you hear distortion, or if your recording program shows levels that are consistently overloaded (at peak levels), turn the microphone volume (or level) down, either through your control panel (or system preferences) settings, or through your recording software. If your recording program shows insufficient level, you can increase the microphone gain either from the control panel (or system preferences) settings or through your recording program.

● Selecting software

You have many choices in recording software. Audacity, available for free online at <http://audacity.sourceforge.net/>, is a widely used software program that provides basic recording software.

Note : The microphone must be plugged in first and secondly turning on the recording software.

● Monitor setting

If you want to listening to yourself, pls click listen to device in your computer system. (Windows system). Remember to click off listen to device in your computer system when you are using any recording software or chatting software(Skype), or else your would hear duet of yourself just like too much echo.

● Protecting your microphone

Avoid leaving your microphone in the open sun or in areas where temperatures exceed 110° F (43° C) for extended periods. Extremely high humidity should also be avoided.

UBeesize®

10.2" Selfie Ring Light Head
with Tripod
customercare@ubeesize.com



— Operating Instructions —





Cameras



Phones



1. Panorama Shot: Rotate the Pan Locking Knob counter-clockwise and move the handle for smooth 360° panorama Shot.



2. The platform plate usage: Loosen the Vertical Tilt Lock Knob to reach the 90° of the platform.



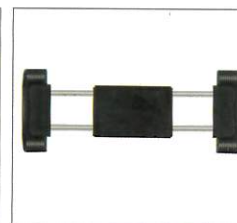
3. Extending the legs: Flip open the leg lock lever and gently pull on the leg segment to the desired length. Max height 50 inches. Press the leg lock lever to secure.



4. Rubber Foot Anti-skid, durable and environmentally friendly.



5. Foldable phone clip.



6. Phone clip can expand to 3.6 inches for most cell phones.



7. Device Lock: Using the 1/4 screw interface to attach the phone clip or camera, then fasten the device locking knob to tighten the device.



8. Vertical Shooting: Rotate the handle counter-clockwise and tilt the Pan head, allow maximum 90° for vertical use. Clockwise rotate the handle to lock.



How to attach the phone holder



10. Put the ball into the nut.



11. Squeeze the ball into the clamp.



12. Tighten the nut.

How to attach the phone holder



13. Assemble the soft tube phone holder by the cold shoe interface



14. Fasten the round screw to tighten the phone holder

How to Choose Lightning Mode



UL 153 passed.
Safety Warning:
Please use a power source under 5V.

USB Cable Powered



UBeesize® Bluetooth Remote Shutter



Contact us:
customercare@ubeesize.com
www.ubeesize.com

Owners Manual

Step 1 Pairing

- A.** Turn the remote on with the power switch located at the side. The blue LED light will flicker.
- B.** Turn on your phone's Bluetooth setting & connect to "UBeesize" in the available devices list. The blue LED light will stop flickering when connected.

Step 2 Using

Open your phone's camera app. Press the button associated with your phone's operating system (iOS for iPhone, Android for Android Phones).

Note: If your camera does not respond it may not be compatible. In this case, download the free app "Camera 360" and use this camera app with the remote.

Step 3 Filming Videos

Switch your phone's camera into Video mode first.
Press the button to start/stop recording videos.

Note for Samsung Cell Phones:

1. Go to camera setting, scroll down and tap "Volume keys function" and choose "Record video".
2. Open the native camera, click the iOS button (Not android) to start the video, click again to stop the video.

Specs

Communication: Bluetooth V 3.0
Frequency: 2.4 GHz-2.4835 GHz
Max Range: 30ft(10m)
Battery Life: Approx 6 months using 10x/day
Dimensions: 48mmx30mmx10mm
Weight: 8g
Compatible with: Android 4.2.2 or newer
iOS 6 or newer



USER MANUAL

PROFESSIONAL PHOTOGRAPHY EQUIPMENT PRODUCER

TRIPOD USER'S MANUAL

Thank you for purchasing tripod for photography.
Please read this manual carefully before using it.



- ① **Pan Head 1/4" Screw:** Fasten the device onto the tripod.
 - ② **Pan Head Lock Knob:** Locking the tripod head into a certain direction.
 - ③ **Panoramic Knob:** Release the panoramic knob and rotate the handle for 360°panoramic shooting.
 - ④ **Tilt-Handle:** Rotate the handle counterclockwise, adjust the vertical angle of the pan head; Rotate the handle clockwise, lock the angle of the pan head.
 - ⑤ **Central Lock:** Release the central lock to adjust the height of central column.
 - ⑥ **Central Bridge:** Strengthen the connecting and stability of the legs.
 - ⑦ **Flip Lock:** Extend and lock the legs to a proper length.
 - ⑧ **Rubber Feet:** For secure and anti-slip intents.
 - ⑨ **Central Column:** Can increase or decrease the corresponding height.
- Products are subject to change without notice.

Notice:

1. Please check the product condition while receive the product.
2. Be sure to fully open the tripod and tighten the locking parts when using it. In case of any accidental damage of your device.
3. Please remove the device from the tripod when moving.
4. Using the tripod under the safety load range.
5. Don't use the tripod on a uneven field.
6. Don't use the tripod under -4°F or over 140°F.
7. The tripod contains conductive material. For your safety, please do not use during thunderstorms weather or near by high voltage wires.
8. Please clean the tripod after use, especially in wet or sandy place. Don't use it on sea water.
9. Tripod contains small components, please keep out of the reach of children.
10. Don't disassemble the tripod at your own discretion. If you have any problem please contact us to get a best solution.

How to connect the Bluetooth:

1. Turn on the shutter by switching the on/off button, the blue light will flash.
2. Active the Bluetooth function on your phone and search for "AB Shutter 3" device and connect.
3. Light will put on when Bluetooth connected successfully.
4. Open your cellphone camera Click the CAMERA button to shot pictures.



2-in-1 clip for phone and tablet

Cell phone width: 3"-7.5"

Tablet width: 7.9"-11"



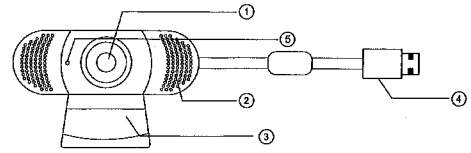
Suitable for lightweight and small devices. Tripod hold capacity is 4.4lbs.



This User Manual is a common manual for model 101, 102, 103, 104 and 105.

WEBCAM MANUAL

Product Structure Diagram



- | | | |
|----------------------|------------|-------------------|
| ① FULL HD 1080P lens | ③ Bracket | ⑤ Indicator Light |
| ② MIC Hole | ④ USB Port | |

Installation Steps



- 1, Open the Camera Mount and point the camera toward the front of the display.



- 2, Press down the Camera Mount and snap the rear end of the camera mount to the back of the screen.

EN



3. Connect USB cable

Parameter Details

Webcam Parameter			
Driver type	driver-free (plug and play)	USB Line length	150cm
SCINTILLATION control	50Hz, 60Hz	Resolution	1920*1080
Photo format	Bmp, jpg	Interface type	USB2.0
Sensor type	1/3" 2MP sensor	Built-in	Sound-absorbing and noise- reducing microphone
Contrast optimization engine	Contrast balance	Focusing range	FULL HD 2MP lens, f=3.6mm, Viewing angle 90°
TWAIN	Support various chat tools and video conferencing software. Such as QQ / WeChat / Dingding / Skype / Facebook / Zoom / YouTube / Face Time, etc.		
VM engine	2MP image processing chip, supporting various ISP processing algorithms And support MPEG / H.264 / H.265 compression		
Support Equipment	Support mainstream computers XP2, Vista, Win7, Win8, Win10 Operating System		

Any question , please feel free to contact us ,
we are always here for you and pleased to serve you.

Customer Service Email :

UK: service3@wansview.com
US: service@wansview.com