

Roku Streaming Stick+ Agreement

Policy for Borrowing and Use Outside of the Library

- You must have a valid library card to checkout.
- Patron must be a resident of Clinton or Macomb Township's service area.
- Patron must be in good standing with the library and have no fines above \$15.00.




**Roku Streaming Stick+ must be factory
reset before returning**

Resetting will:

- *Erase your personal preferences.
- *Unlink your Roku device from your Roku account.
- *Reset all settings and return your Roku device to a state ready for initial setup.

Instructions for factory reset from device settings:

1. Press the Home button  on your Roku remote.
2. Scroll up or down and select Settings.
3. Select System.
4. Select Advanced system settings.
5. Select Factory reset.
6. Select Factory reset everything and follow the on-screen instructions.

Roku Streaming Stick+ Agreement

Policy for Borrowing and Use Outside of the Library

- You must have a valid library card to checkout.
- Patron must be a resident of Clinton or Macomb Township's service area.
- Patron must be in good standing with the library and have no fines above \$15.00.




**Roku Streaming Stick+ must be factory
reset before returning**

Resetting will:

- *Erase your personal preferences.
- *Unlink your Roku device from your Roku account.
- *Reset all settings and return your Roku device to a state ready for initial setup.

Instructions for factory reset from device settings:

1. Press the Home button  on your Roku remote.
2. Scroll up or down and select Settings.
3. Select System.
4. Select Advanced system settings.
5. Select Factory reset.
6. Select Factory reset everything and follow the on-screen instructions.

Fines and Liability

- The overdue fine is \$1.00 per day until returned.
- The patron is responsible for costs associated with the loss or damage of the Roku Streaming Stick+ and/or peripherals.

Replacement Parts:

Roku Streaming Stick+: \$69.95
Roku USB Power Cable: \$20.00
Remote: \$15.00
USB Extender: \$9.00
Power Adapter: \$9.95
Instructions: \$1.00
Bag: \$5.00

Fines and Liability

- The overdue fine is \$1.00 per day un. l returned.
- The patron is responsible for costs associated with the loss or damage of the Roku Streaming Stick+ and/or peripherals.

Replacement Parts:

Roku Streaming Stick+: \$69.95
Roku USB Power Cable: \$20.00
Remote: \$15.00
USB Extender: \$9.00
Power Adapter: \$9.95
Instructions: \$1.00
Bag: \$5.00

Instructions for factory reset using the hardware reset button:

On the Roku Streaming stick you will be looking for the RESET Button.



Once the reset button is located and your Roku device is powered on, press and hold the reset button firmly for up to 20 seconds. The indicator light will blink rapidly on most Roku devices when the factory reset is complete.

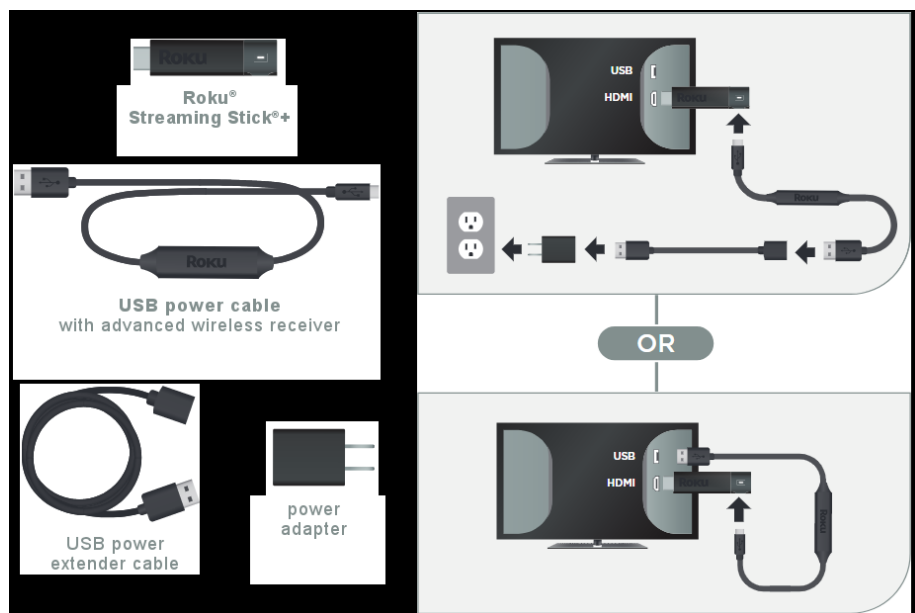
Instructions for factory reset using the hardware reset button:

On the Roku Streaming stick you will be looking for the RESET Button.



Once the reset button is located and your Roku device is powered on, press and hold the reset button firmly for up to 20 seconds. The indicator light will blink rapidly on most Roku devices when the factory reset is complete.

Connecting Roku Streaming Stick+



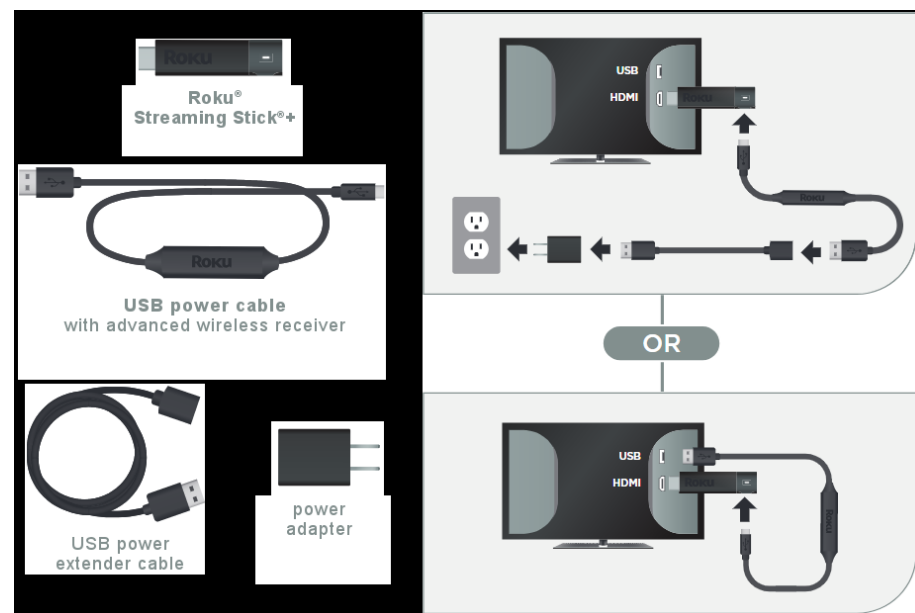
Finally, attach the advanced wireless receiver firmly to the Roku Streaming Stick+. A poor connection will prevent your Streaming Stick+ from connecting to your wireless network and ultimately the internet.

Note: If you recently moved your Roku Streaming Stick+ from another HDMI input, or another TV altogether, make sure to check that all connections are secure before use.

Setting up Roku Streaming Stick+

Make sure the correct TV input is selected on your TV (the input to which your Streaming Stick+ is connected). You should see the Roku logo on the TV screen as your Streaming Stick+ powers on.

Connecting Roku Streaming Stick+



Finally, attach the advanced wireless receiver firmly to the Roku Streaming Stick+. A poor connection will prevent your Streaming Stick+ from connecting to your wireless network and ultimately the internet.

Note: If you recently moved your Roku Streaming Stick+ from another HDMI input, or another TV altogether, make sure to check that all connections are secure before use.

Setting up Roku Streaming Stick+

Make sure the correct TV input is selected on your TV (the input to which your Streaming Stick+ is connected). You should see the Roku logo on the TV screen as your Streaming Stick+ powers on.

To get started, connect your Roku Streaming Stick+ to an available HDMI port on your TV. If you plan to stream movies and TV shows in 4K or 4K HDR, remember to select an HDMI 2.0 port that supports HDCP 2.2.

If your Roku Streaming Stick+ will not easily connect to the HDMI port on your TV due to space restrictions, then you may wish to connect with the HDMI extender cable.

Next, plug the USB power cable with advanced wireless receiver into a suitable power source – either the USB port on your TV, or preferably, a wall outlet (when used with the USB power extender cable and power adapter).

Note: The USB port on some TV's may be unable to power a Streaming Stick+. If you see the on-screen warning message that appears in these cases, use a wall outlet.

1. Choose a language

--The first screen you see will allow you to choose a language. All text and dialog within the Roku application will be displayed in the selected language.

--Scroll up and down the list and press the OK button on your Roku remote to choose a language.

Note: It is the responsibility of the channel publisher to translate their channel and some channels may not support your chosen language.

2. Connect your Roku Streaming Stick+ to your network and the internet

--Choose your wireless network from the list of available networks and enter your password. This is most often the same network you use to connect your computer or smartphone to the internet. If you do not see your network, select Scan again to see all networks.

To get started, connect your Roku Streaming Stick+ to an available HDMI port on your TV. If you plan to stream movies and TV shows in 4K or 4K HDR, remember to select an HDMI 2.0 port that supports HDCP 2.2.

If your Roku Streaming Stick+ will not easily connect to the HDMI port on your TV due to space restrictions, then you may wish to connect with the HDMI extender cable.

Next, plug the USB power cable with advanced wireless receiver into a suitable power source – either the USB port on your TV, or preferably, a wall outlet (when used with the USB power extender cable and power adapter).

Note: The USB port on some TV's may be unable to power a Streaming Stick+. If you see the on-screen warning message that appears in these cases, use a wall outlet.

1. Choose a language

--The first screen you see will allow you to choose a language. All text and dialog within the Roku application will be displayed in the selected language.

--Scroll up and down the list and press the OK button on your Roku remote to choose a language.

Note: It is the responsibility of the channel publisher to translate their channel and some channels may not support your chosen language.

2. Connect your Roku Streaming Stick+ to your network and the internet

--Choose your wireless network from the list of available networks and enter your password. This is most often the same network you use to connect your computer or smartphone to the internet. If you do not see your network, select Scan again to see all networks.

--If you want to see your password as you type, choose **Show password**. This can help prevent entering the wrong password. Remember, passwords are case-sensitive. Use the shift button **⇧** on the on-screen keyboard to enter a capital letter.

--Once you have entered your password and selected **Connect**, your Roku Streaming Stick+ will automatically connect to the internet.

3. Wait for your Roku Streaming Stick+ to download the latest software

--Once connected to the internet, your Roku Streaming Stick+ will download the latest version of Roku OS software and then reboot.

4. Set the display type

--Select **Auto detect display type** and your Streaming Stick+ will analyze the HDMI connection to determine the supported video resolutions. To have your Streaming Stick+ automatically choose the best display resolution so you don't have to manually configure the settings, choose **OK, go to automatic**. To change the display type at a later time, go to **Settings > Display type**.

--Instructions for activating your Roku Streaming Stick+ will be displayed on your TV, including an activation code; e.g. "XCV5TG". You will be required to visit roku.com/link on your computer or smartphone, enter the code and follow the instructions to activate your Roku Streaming Stick+.

Note: Roku does NOT charge for device activation. When entering roku.com/link into your web browser, type it carefully to avoid fraudulent websites.

7. You are done!

Once you have completed all activation steps, your Roku Streaming Stick+ will be ready to use.

Tips: You can personalize your Roku Streaming Stick+ by changing your theme or screensaver. You can use the Roku Channel Store to add new streaming channels, games, themes, screensavers, and other apps.

--If you want to see your password as you type, choose **Show password**. This can help prevent entering the wrong password. Remember, passwords are case-sensitive. Use the shift button **⇧** on the on-screen keyboard to enter a capital letter.

--Once you have entered your password and selected **Connect**, your Roku Streaming Stick+ will automatically connect to the internet.

3. Wait for your Roku Streaming Stick+ to download the latest software

--Once connected to the internet, your Roku Streaming Stick+ will download the latest version of Roku OS software and then reboot.

4. Set the display type

--Select **Auto detect display type** and your Streaming Stick+ will analyze the HDMI connection to determine the supported video resolutions. To have your Streaming Stick+ automatically choose the best display resolution so you don't have to manually configure the settings, choose **OK, go to automatic**. To change the display type at a later time, go to **Settings > Display type**.

--Instructions for activating your Roku Streaming Stick+ will be displayed on your TV, including an activation code; e.g. "XCV5TG". You will be required to visit roku.com/link on your computer or smartphone, enter the code and follow the instructions to activate your Roku Streaming Stick+.

Note: Roku does NOT charge for device activation. When entering roku.com/link into your web browser, type it carefully to avoid fraudulent websites.

7. You are done!

Once you have completed all activation steps, your Roku Streaming Stick+ will be ready to use.

Tips: You can personalize your Roku Streaming Stick+ by changing your theme or screensaver. You can use the Roku Channel Store to add new streaming channels, games, themes, screensavers, and other apps.

--If support for 4K or 4K HDR is not detected and you are using a 4K compatible TV or a 4K HDR compatible TV, make sure all HDMI cables are firmly attached and all connections support HDCP 2.2.

5. Set up your Roku Enhanced remote to control your TV

--Select **Check remote settings** to automatically set up your Roku Enhanced remote to control the power and volume for your TV. If you prefer, you can set up your remote at any time from the settings menu. Go to **Settings > Remote > Set up remote for TV control**.

Note: The Roku Enhanced Remote may not be able to control volume and power on all TV models. With some TV models, you may only be able to control the volume, and not the power.

6. Create a Roku account and activate your Roku Streaming Stick

--In order to activate your Roku Streaming Stick, it must be linked to a Roku account. our Roku account keeps track of which Roku devices you own and allows you to add free and purchase channels from the Roku Channel Store.

Note: There is NEVER a charge to create a Roku account.

--If support for 4K or 4K HDR is not detected and you are using a 4K compatible TV or a 4K HDR compatible TV, make sure all HDMI cables are firmly attached and all connections support HDCP 2.2.

5. Set up your Roku Enhanced remote to control your TV

--Select **Check remote settings** to automatically set up your Roku Enhanced remote to control the power and volume for your TV. If you prefer, you can set up your remote at any time from the settings menu. Go to **Settings > Remote > Set up remote for TV control**.

Note: The Roku Enhanced Remote may not be able to control volume and power on all TV models. With some TV models, you may only be able to control the volume, and not the power.

6. Create a Roku account and activate your Roku Streaming Stick

--In order to activate your Roku Streaming Stick, it must be linked to a Roku account. our Roku account keeps track of which Roku devices you own and allows you to add free and purchase channels from the Roku Channel Store.

Note: There is NEVER a charge to create a Roku account.