

Photo Scanner Instructions

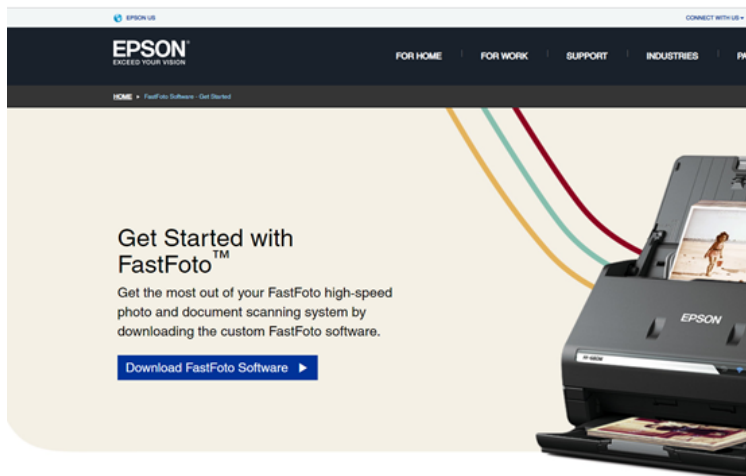
Note: When you get the scanner, it will be in two parts:



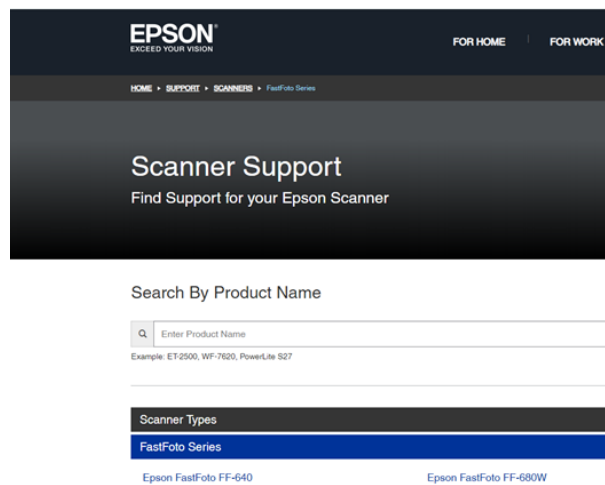
Fit the paper guide piece into the base of the scanner so it looks like this:



1. Prepare your cables. Plug the scanner into a power source with the provided cable, but do not plug the USB cable provided into your PC yet.
2. Visit www.fastfoto.com/getstarted to download the software necessary to run the scanner. Begin by clicking Download FastFoto Software.



3. Next, click the Epson FastFoto FF-640 model.



4. On the next page, choose your Operating System from the dropdown menu, and then click Download on the Drivers and Utilities Combo Package.



5. By default, the program will download into your Downloads folder. Open it, and follow the on-screen instructions.

6. When prompted, plug the scanner into your PC using the USB cable provided and turn the scanner on by pressing the grey power button.

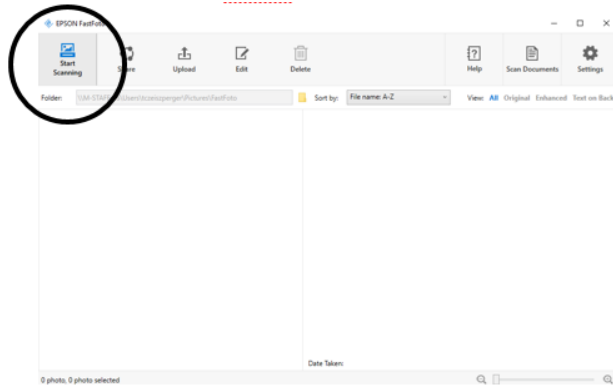
7. Upon finishing installation, the FastFoto program will open automatically and be ready to use. In addition, a FastFoto icon will be placed on your Desktop if you wish to use it later.



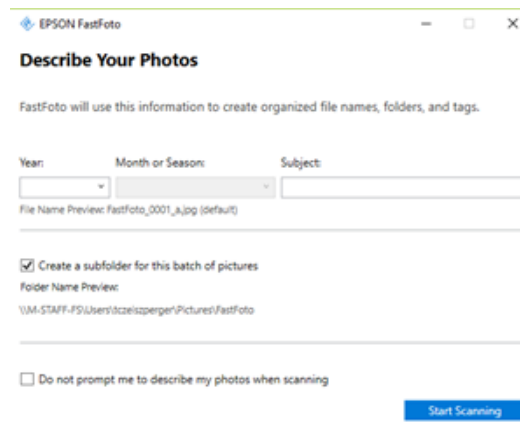
8. Insert your photos into the scanner. Pictures should be Face-down and upside-down.



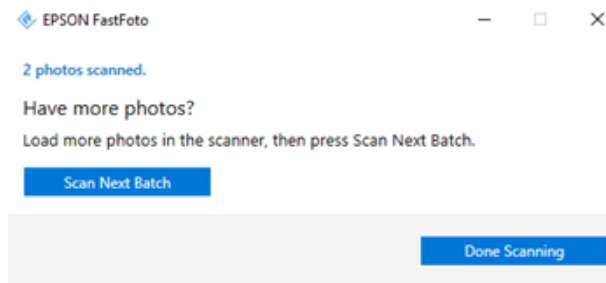
9. With the Epson FastFoto software open, click start scanning.



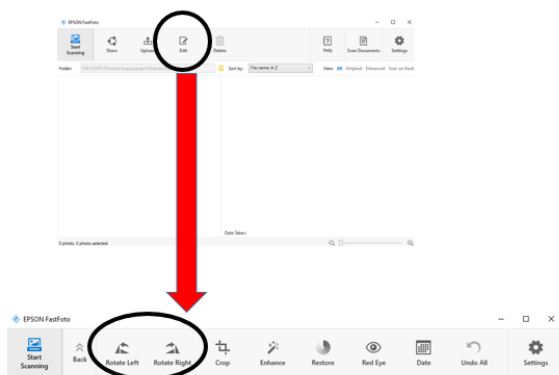
10. A box labeled describe your photos will appear. Entering in the year, month or season, and subject of your photos is optional. Click start scanning.



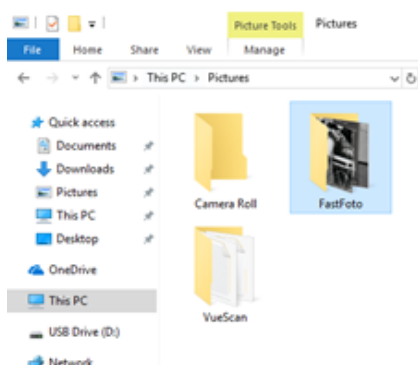
11. After these pictures have scanned, you have the option of scanning more photos. If you would like to do so, click scan next batch. If you are finished scanning, click done scanning.



12. Optional: if your pictures need to be rotated, press the edit button, and then the rotate left or rotate right button. In this menu, your photos can also be cropped, enhanced, restored, or red-eye adjusted.



13. By default, your pictures will be saved in Windows' Pictures folder, inside the FastFoto folder



When finished with the scanner, please pack it so the bottom of the scanner faces the bottom of the travel bag. This will help prevent damage from dropping or transporting the scanner.

