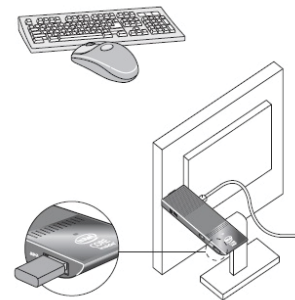


PC on a Stick Instructions

USB wired keyboard (A) and mouse (B), connected to the ports on the power adapter.



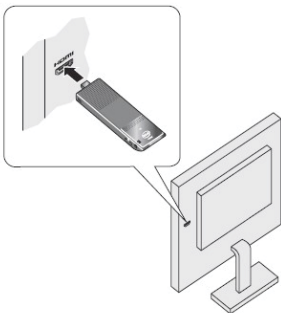
USB wireless keyboard and mouse, using a USB dongle.



NOTE: When using the wireless keyboard and mouse you will need to flip on the power switch for each device. When you are done with them remember to turn the power back off.

Connect Directly to a Display

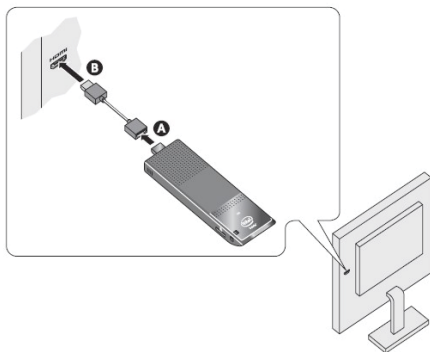
Plug the Intel® Compute Stick directly into a standard HDMI port on a television or monitor. The Intel Compute Stick will extend about 4.5 inches (113 mm) out from the HDMI port.



Connect to a Display with the HDMI Extender Cable

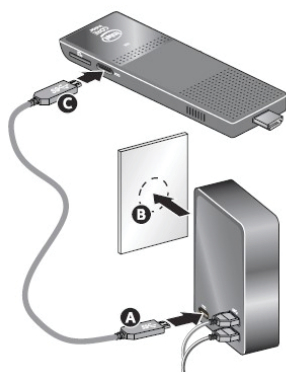
If there is limited space around the HDMI port of the television or monitor to allow you to plug the Intel® Compute Stick directly into the port, use the flexible HDMI extender cable that came in the box.

1. Plug the Intel Compute Stick into the female end of the extender cable (A).
2. Plug the male end of the extender cable into the HDMI port on the television or monitor (B).



Powering the Device

Connect the power cable (A) to the power adapter. Plug the power adapter into an AC power source (B). Connect the power cable (C) to the Intel® Compute Stick as shown.



The Intel Compute Stick will turn on automatically when power is applied.

Turn off the Intel Compute Stick using the normal shutdown process for Windows*.

Subsequent power-ups are done just by pressing the power button on the side of the Intel Compute Stick.

Note	<p>The Intel Compute Stick is designed to use up to 10W of power. USB ports on televisions or monitors do not supply enough power for the Intel Compute Stick. If you try to use a USB port on the television to power the Intel Compute Stick, these are the likely symptoms:</p> <ul style="list-style-type: none">• It doesn't turn on.• It turns on but doesn't boot.• It turns on, but the operating system doesn't load.• It turns on and the operating system loads, but it performs very slowly, reboots, or locks up.
-------------	---

Creating a User Name and Password

When you power on Compute Stick follow the prompts on the screen to set up a user name and password to allow you to save your work.