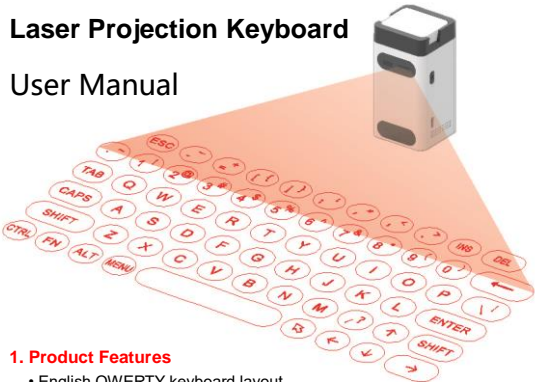


# Laser Projection Keyboard

## User Manual



### 1. Product Features

- English QWERTY keyboard layout.
- Mouse function.
- Cell phone stand.
- Power bank.
- USB connection.
- Bluetooth connection 3.0.
- Built-in G-sensor.
- Built-in Lithium-ion rechargeable battery for mobility and convenience
- Compatible with latest operating systems: Windows 7 & later, Windows Phone 7 & later, iOS8& later, Android 4.0 & later, Mac OS X & later.

### 2. Package Contents

- Laser Projection Keyboard • USB Type-C Cable • User's Manual

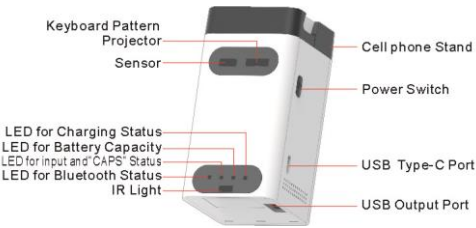
### 3. Safety Precautions

1. Avoid exposing this product to direct sunlight for extended periods of time, and keep it away from heat sources.
2. There is a risk of malfunction if product is used in places where sudden or extreme temperature changes occur.
3. Applying excessive force or impact to this product may result in product damage, and will void warranty.
4. Never attempt to disassemble or service this product yourself. Doing so can result in electrical shock and will void the warranty.
5. This is a Class 2 Laser product. For your safety, please do not stare directly into the laser source. Doing so could damage your eyes.
6. Avoid placing any object within the space between the main unit and the laser projection keyboard layout.
7. Please do not use this product on uneven or irregular surfaces. Place the product on a flat surface. Avoid table or surface that is as transparent or reflective as glass or mirror.

**Note:** Because this product uses infrared rays, strong infrared radiation from direct or reflected sunlight or from tungsten (halogen or incandescent) lighting may cause operating error.

### 4. Identifying Parts and Their Functions.

1. Projector: laser projects an image of keyboard pattern onto a flat surface in front of the typist
2. Sensor: detects reflection of infrared and triangulates the location to determine a keystroke
3. IR Light: emits an invisible plane of light to blanket operational area



### LED Indicator

	On	Blinking	Off
Bluetooth LED	Seccessfull pairing	Searching bluetooth device	x
Input LED	"CAPS" Tap	Text Input	"CAPS" Cancel
Capacity LED	Power bank working	Low battery	x
Charging LED	Charging completion	Battery charging	x

### 5. Mechanical guide

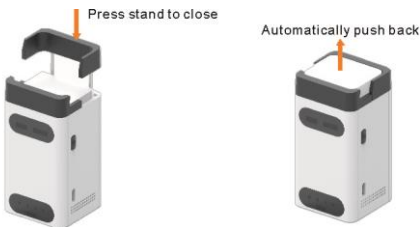
Press the buton to open phone stand

Pops up cell phone stand



Phone under 6 Inch work better

## Push back phone stand



## 6. Connecting via USB

• Laser Projection Keyboard is compatible with all USB HID capable operating systems. USB HID connection allows plug-on-play without installing a separate drive.

1. Connect Laser Projection Keyboard and host device using supplied USB Type-C cable. Host device must support USB HID.
2. Power on Laser Projection Keyboard.

## 7. Connecting via Bluetooth

- Laser Projection Keyboard supports Bluetooth HID:
- Connection via Bluetooth HID does not require installation of separate driver as long as the host device has HID compatibility.
- Bluetooth 3.0 or higher required for connecting to some devices.

### Bluetooth Connection Instruction

1. Power on Laser Projection Keyboard
2. Bluetooth Status LED will be blinking indicating the Laser Projection Keyboard is searching for a new device or previously paired devices within its proximity .  
Laser Projection Keyboard will automatically attempt to re-connect to the recently connected devices

This feature is added for convenience, assuming there is a single host device.

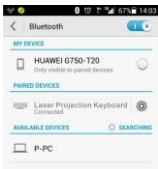
If the Laser Projection Keyboard has re-connect the recently connected devices but it need pair for a new device, Turn the connected device Bluetooth off, the Bluetooth Status LED will be blinking again.

3. On primary device, go to Bluetooth setting; search for Bluetooth devices.
4. When the device discovers" Laser Projection keyboard", tap to connect.
5. Upon successful pairing, the LED will stop blinking and turn on

Screen shot of successful pairing on iOS



on Android



## 8. Power Saving and Safety Mode Guide

- The brightness will change to low level if there is no operation on the keyboard within 30 seconds.

Press any key to resume to standard brightness.

Factory default brightness is the highest level during power on.

- The product will be automatically standby if there is no operation on the keyboard within 5 minute. Press Power Switch to restart the product.
- The keyboard pattern projector and IR light will turn off if the device in use is dumped or left the table. The keyboard pattern projector and IR light will automatically turn on if the device is placed correctly on the table.

## 9. Making Adjustments


### >Sound Feedback Ajustment


- There are total of 5 levels; sound level remains as adjusted when device is turned off and on.
- To increase sound level: Tap and hold "FN" key and tap "RIGHT" arrow key.
- To decrease sound level: Tap and hold "FN" key and tap "LEFT" arrow key.

### >Projection Brightness Adjustment

- There are total of 4 brightness levels.
- To increase brightness: Tap and hold "FN" key and tap "UP" arrow key.
- To decrease brightness: Tap and hold "FN" key and tap "DOWN" arrow key.

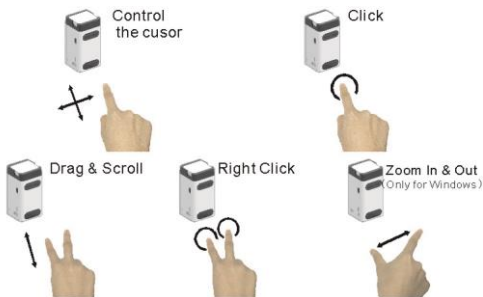
## 10. Mouse Mode

To change keyboard mode to mouse mode on the keyboard, press the  key. The projection keyboard brightness will change to low level.

To Change mouse mode to keyboard mode, on the keyboard, press the  key. The projection keyboard resume to standard brightness.

+Mouse/cursor function is available on devices that support such feature (Most Windows, Android and Mac OS).

**Note:** iOS devices do not support mouse function.



## 11. Power bank

Laser Projection Keyboard has high capacity lithium-ion batteries, lightweight, safety, environmental protection. Via the attached cable, not only can power the portabled device directly, but also can charge the built-in battery. It provides adequate back-up energy for the wild expedition, traveling, adventure, and travel home.

1. Charging the built-in battery:

The applicable standard cable plug in the computer USB or USB Charger, connect to the USB Type-C port of mobile power, It will automatic wake-up charging. During charging, the charging LED in blinking. When the LED is constantly on, it indicates charging completed.

3. Use Laser Projection Keyboard to charge other comsumer electronics :

Connect the Laser Projection Keyboard to the device through use of USB ports. The power capacity LED will turn on and start to charge the device.

CAUTION: RISK OF EXPLOSION IF BATTERY IS REPLACED BY AN INCORRECT TYPE. DISPOSE OF USED BATTERIES ACCORDING TO THE INSTRUCTIONS.

FCC Warning:

This equipment has been tested and found to comply with the limits for a Class B digital device, pursuant to part 15 of the FCC Rules. These limits are designed to provide reasonable protection against harmful interference in a residential installation. This equipment generates, uses and can radiate radio frequency energy and, if not installed and used in accordance with the instructions, may cause harmful interference to radio communications. However, there is no guarantee that interference will not occur in a particular installation. If this equipment does cause harmful interference to radio or television reception, which can be determined by turning the equipment off and on, the user is encouraged to try to correct the interference by one or more of the following measures:

- Reorient or relocate the receiving antenna.
- Increase the separation between the equipment and receiver.
- Connect the equipment into an outlet on a circuit different from that to which the receiver is connected.
- Consult the dealer or an experienced radio/TV technician for help.

Caution: Any changes or modifications to this device not explicitly approved by manufacturer could void your authority to operate this quipment.

This device complies with part 15 of the FCC Rules. Operation is subject to the following two conditions: (1) This device may not cause harmful interference, and (2) this device must accept any interference received, including interference that may cause undesired operation.

This equipment complies with FCC RF radiation exposure limits set forth for an uncontrolled environment. This device and its antenna must not be located or operating in conjunction with any other antenna or transmitter.

The device has been evaluated to meet general RF exposure requirement. The device can be used in portable exposure condition without restriction.