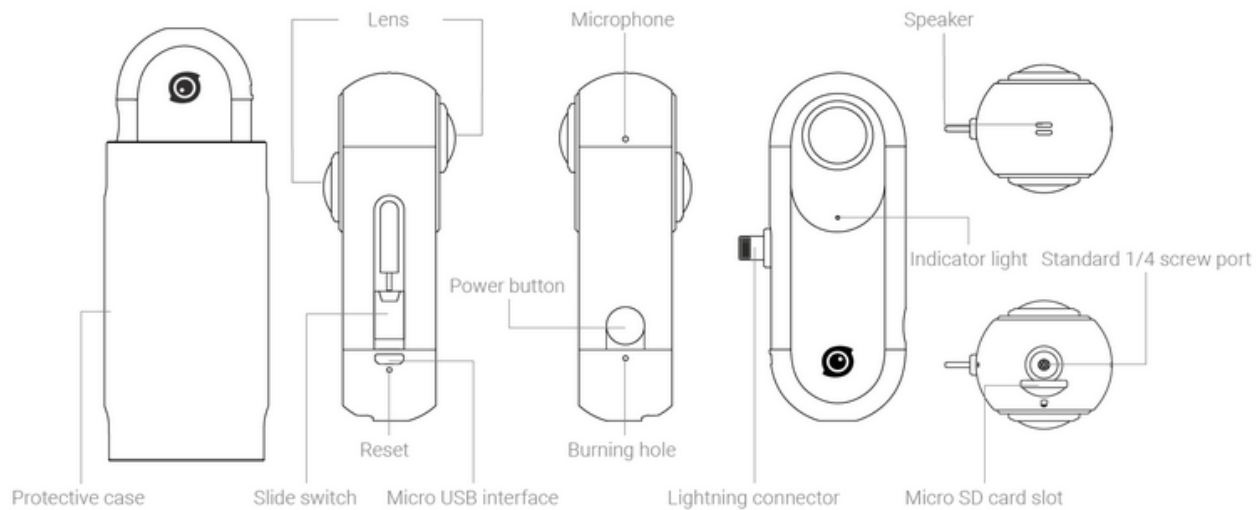
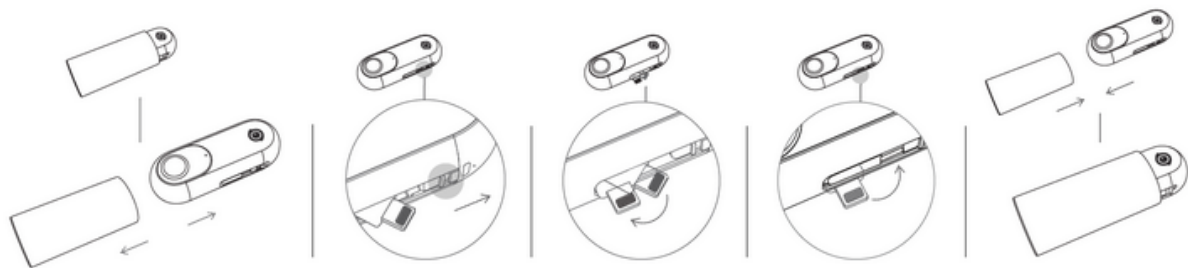


360 Camera Instructions



Use with iPhone/iPad



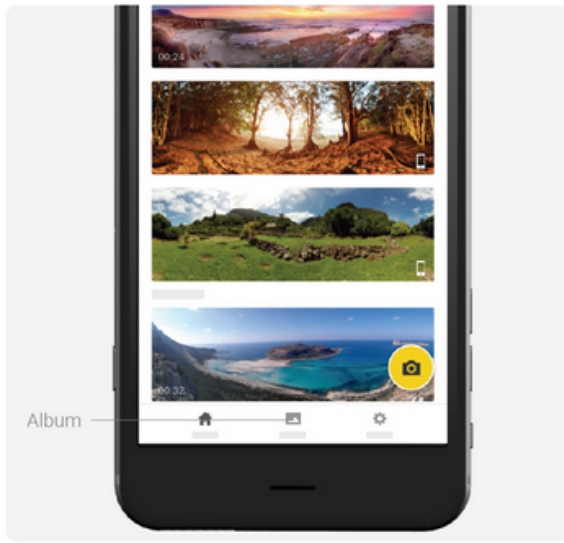
- 01** Before you use the camera, please remove the protective case first. Toggle the switch, the Lightning connector will automatically pop up. Set the Lightning connector to the position shown in the diagram above. Please press the Lightning connector back into the camera and protect the lens with the case after use.



- 02** When iPhone/iPad first detects the device, an app installing notification will pop up. Other two options are scanning the QR code to install and visiting https://www.insta360.com/r/download_insta360one_ios to download.



- 03** When connected successfully, click the shutter button on the shooting interface to take photos.



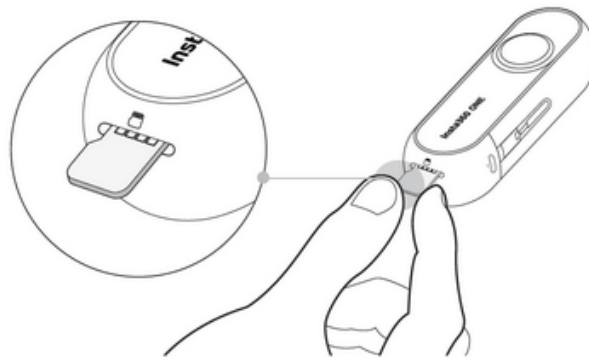
04 Click **album** to preview.



05 Click **share** to share the image to social media platforms.


Storage

1. When used with iPhone/iPad (without Micro SD card installed), the images/videos are stored in the devices. With Micro SD card installed, the images/videos are stored in the card by default. You can transfer the images/videos to your computer through iTunes or Micro SD card.
2. Support Micro SD card with both UHS-I and exFAT (FAT64) format. As for the memory, up to 128GB can be supported.
3. For long time recording, a video will automatically be stored in multiple separate files.



Bluetooth

With Micro SD card installed, the camera can be used to take photos/videos remotely via Insta360 ONE app.

1. Please first go to https://www.insta360.com/r/download_insta360one_ios to download Insta360 ONE app.
2. When the camera is on, Bluetooth is enabled by default.
3. Open the app, click  on the shooting page in the app to connect the camera via the Bluetooth.
4. You can use the app to take photos or videos in the effective operating distance.
5. After shooting, connect the camera to iPhone/iPad to review.

* Note:

When operating in an open space, the recommended remote-control range is within 3 meters, with a maximum range of 10 meters.

Independent Mode

With Micro SD card installed, the camera can be used independently to take photos and videos.



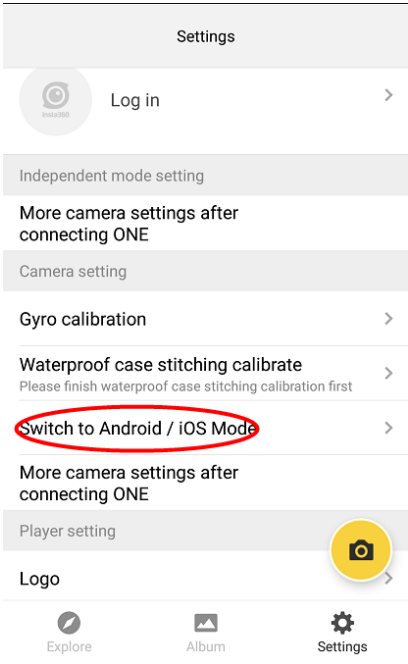
- 1. Click the power button to turn on the camera.
- 2. In the standby mode, click the power button to take a photo, and the indicator light blinks green once.
- 3. In the standby mode, click the power button twice to shoot a video. The indicator light keeps green during video recording. You can stop recording by clicking the power button again.
- 4. In the standby mode, triple-click the power button to enable Bullet time mode for video recording. The indicator light keeps green during video recording. You can stop recording by clicking the power button again.
- 5. Connect the camera to iPhone, you can set the triple-click default mode to time-lapse or timer in the app. Once set successfully, you can configure time-lapse or timer settings in the app.
- 6. Once finishing videotaping/taking photos, they will be stored in the Micro SD card. You can connect the camera to your devices to review.

*** Note:**

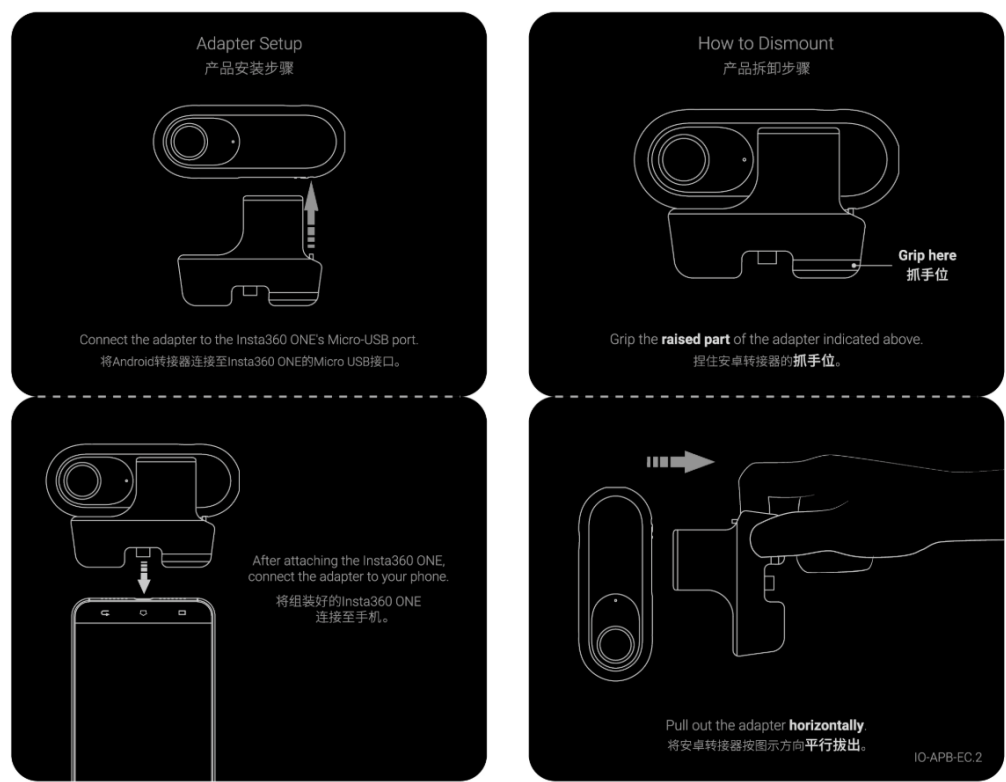
When the camera is used independently, the protective case can be used as a tripod or handle.

Use with an Android device

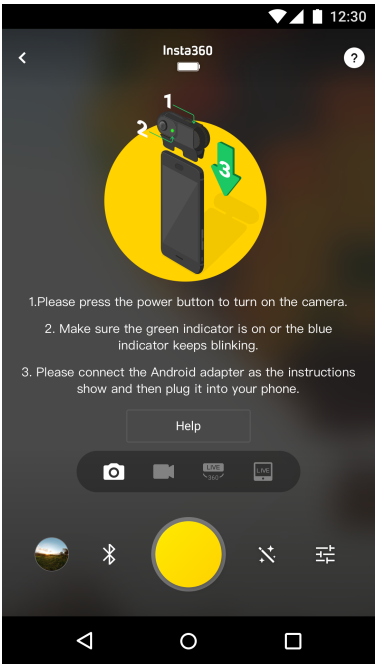
- 1. Download Insta360 ONE Android App
- 2. Enter Setting in App-> Switch between Android/iOS mode, switch the camera to the Android mode.



3. Connect the Android adapter following the instructions.



4. Press the power button to turn on the camera.



5. Make sure the green indicator is on or the blue indicator keeps blinking .

6. Plug the camera into your phone.

*For OPPO devices, please turn on OTG function in system setting first and then plug the camera into your phone.

*For vivo devices, please turn on OTG function in setting first and then plug the camera into your phone.

*For Sony devices, please follow the instructions above. After connecting your phone, enter setting, tab 'USB Connectivity', and turn on 'Detect USB device'.

Using Bullet Time Accessory

