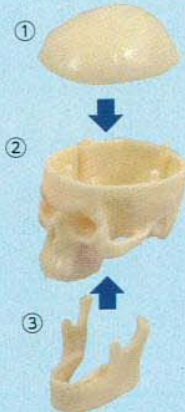


How to assemble

● Assemble the head



1

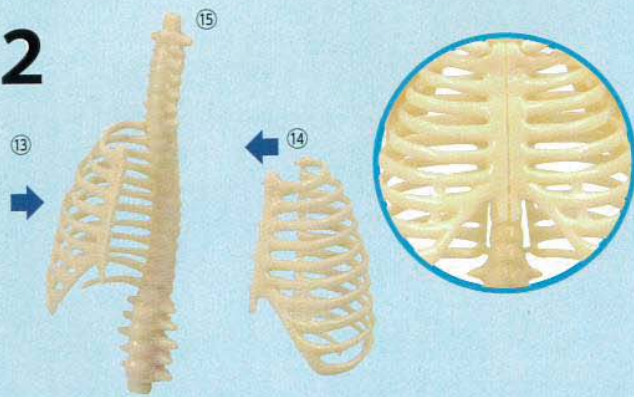


Attach the upper skull and the jawbone to the lower skull.

● Assemble the upper body



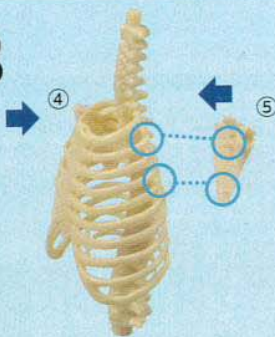
2



Attach the right and left ribs. Fit the edges of the ribs into the holes in each side of the spine.



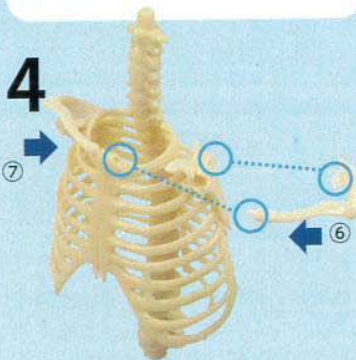
3



Attach the right and left scapulas.



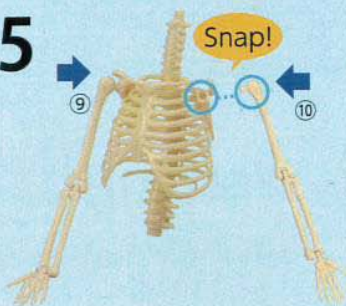
4



Attach the clavicles to the scapulas.

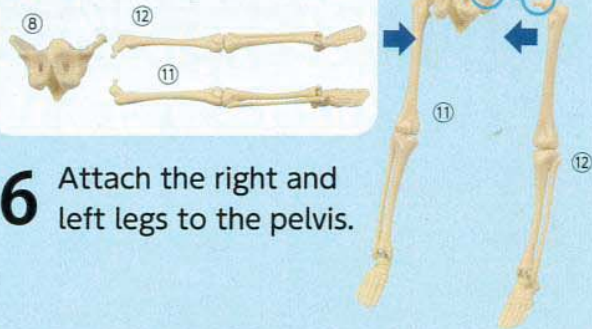


5



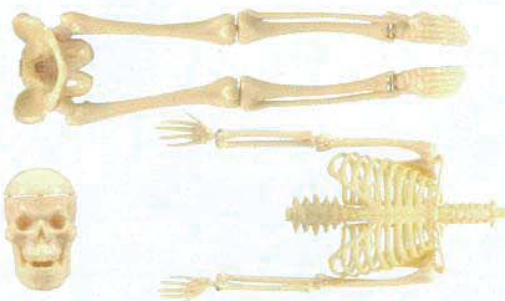
Attach the right and left arms to the scapulas.

● Assemble the lower body



6 Attach the right and left legs to the pelvis.

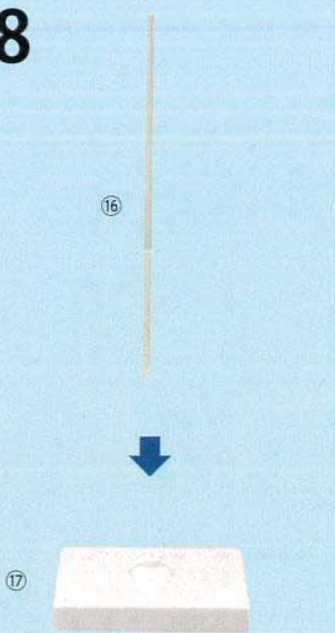
● Overall assembly



7 Attach the skull and the pelvis to the spine.



8



Push the rod into the base.

9



Set the skeleton on the rod.



人体躯干安装程序

HUMAN TORSO PROCEDURES FOR INSTALLING ORGANS

《前部安装》 《Anterior Installation》



1. 所有胸腔和腹腔都没有内脏。
All the thorax cavity and abdominal cavity without viscera.



2. 将后右半肺放入右胸腔处。
必须靠紧上右侧壁。
Put the posterior right half lung into right thorax cavity, it must be closed to right side wall.



3. 将后左半肺放入左胸腔处。
必须靠紧上左侧壁。
Then Put the posterior left half lung into thorax cavity, it must be closed to left side wall.



4. 将气管食管放入中间靠胸脊柱处,必须灰白色气管朝上,切勿弄错上下方向,靠紧脊住。
Put trachea and oesophagus into the middle nearby thoracic spinal column, be sure the trachea in hoariness up towards, Don't make a mistake with ddirection of up and down, it mustbe closed to spinal column.



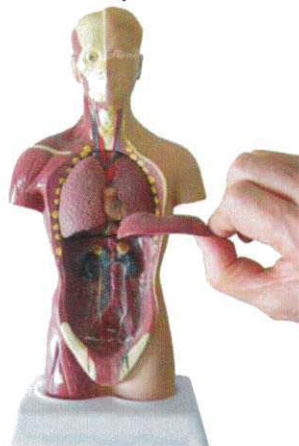
5. 将心脏放入两左右半肺中间,而且在气食管之上,必须心脏主动脉(红色)和上腔静脉(蓝色)朝上,顶到颈部相应血管,切勿弄错方向。
Put the heart into the middle of left and right half lung, also above the oesophagus, it is necessary that the aorta of heart (red) and superior vena cava (blue) should be up towards, prop up the related blood vessel of cervical part, Don't make wrong direction.



6. 将前右半肺的梢钉对准插入后右半肺插洞内,必须压紧。
Let the nail of anterior right half lung insert into the hole of posterior right left lung, must be impacted.



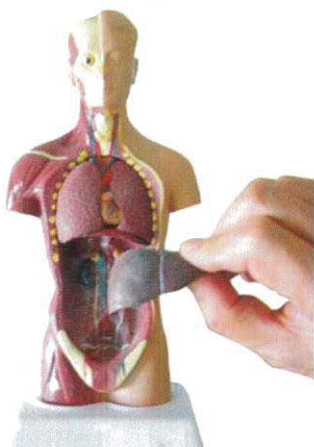
7. 将前左半肺对准梢钉对准插入后左半肺插洞内,必须压紧。
Let the nail of for mer left half lung insert into the hole of back left lung, must be impacted.



8. 将横膈膜认准,有凹口处向下切勿弄错方向。
See diaphragm clearly, please remember therelis a notch, put it down, and don't make wrong direction,



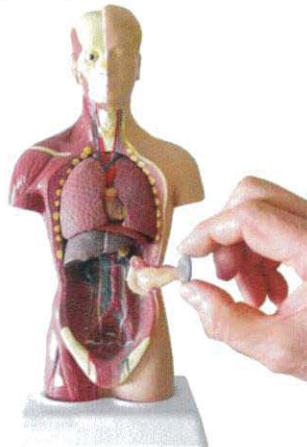
9. 将横膈膜插入两肺下方,必须靠紧肺脏。
Insert diaphragm into the below of two lungs, it must closed to lung.



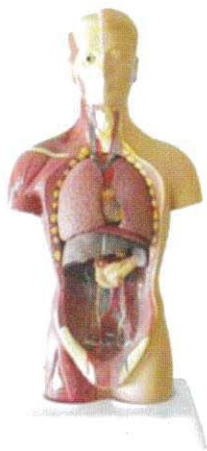
10. 将肝脏认准左右,前后方向,如图所示,切勿弄错。
See direction (left, right, front and back) of liver clearly, as illustrated. Don't make wrong direction.



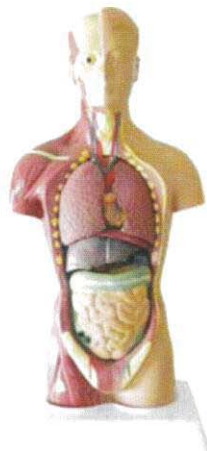
11. 将肝脏准确放入腹右上方,必须靠紧横膈膜。
Put liver into abdomen up towards truly, it must be closed to diaphragm.



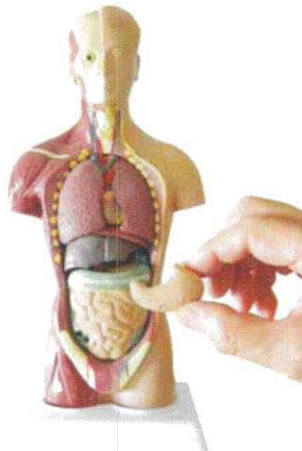
12. 将脾脏,胰脏和十二指肠认准左右,前后方向,如图所示。
Recognized the right direction (left, right, front and back) of spleen, pancreas and duodenum, as picture show.



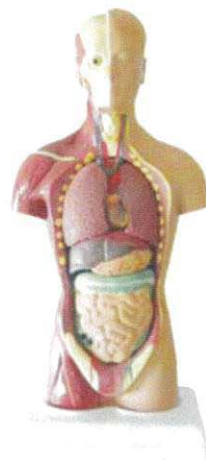
13. 将脾脏,胰脏和十二指肠如图所示放入腹左上方,必须靠紧.
As picture show put spleen, pancreas, and duodenum into the left up towards of abdomen, must be closed.



14. 将大肠,小肠认准方向可先放入腹腔.
See the direction of large and small intestine clearly then put into abdomen.



15. 将胃脏认准左,右,前,后方向,如图所示.
Recognize the direction (left, right, front and back) of stomach, as picture show.



16. 将胃脏先大头推入腹腔,必须按压紧.
Put stomach into abdomen, should be impacted.

《后背安装》 《Posterior Installation》



17. 头部脑应清空.
Should clear up the brain.



18. 将左右两半脑认准前后半脑对准.
Let two right and left half brain aim at the back half brain.



19. 将左右两半脑按梢钉插入,必须靠紧.
Plug the nail into the two right and left half brain, should be impacted.



20. 将安装好完整脑,前脑插入脑腔,必须靠紧,可见小脑.
Insert the whole installed brain into skull, it must be impacted and can look the cerebellum.



21. 将后脑盖的下部梢钉先插入洞按紧,再将上梢钉插入洞必须压紧后脑盖,如此安装完成.
Insert the below nail of back head into the hole, then push it strictly, insert the up nail into hole, should be pressed back brain cover, such and such finish the installation.