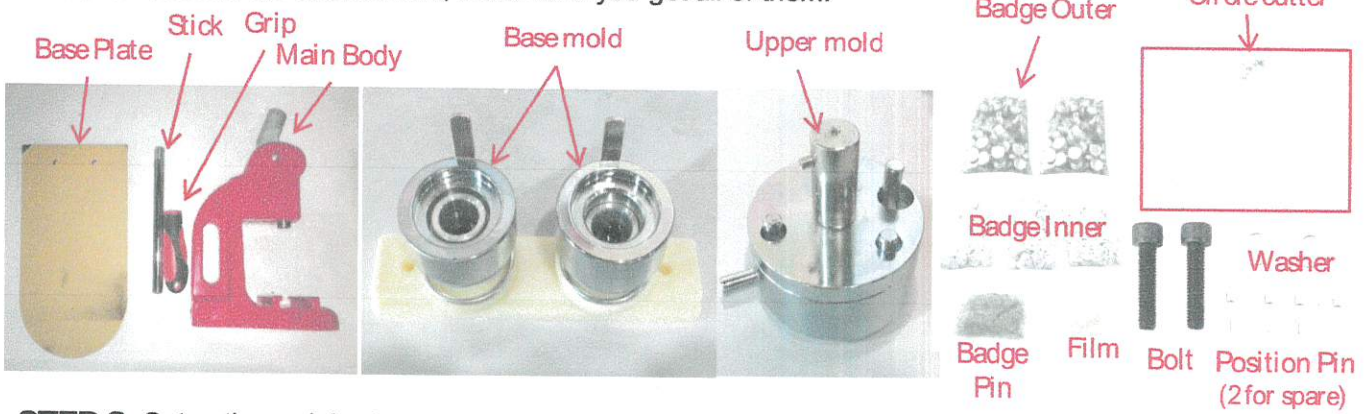
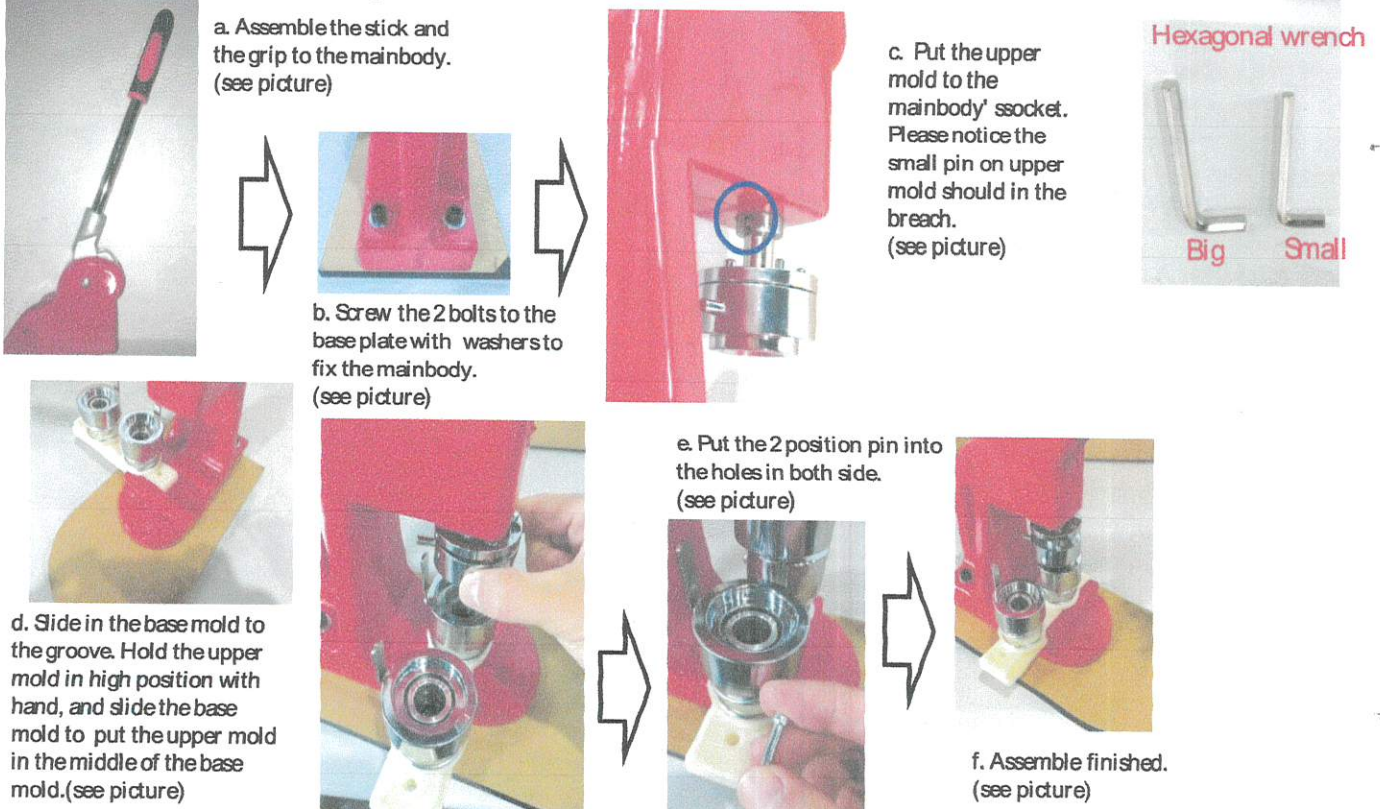


# Badge Maker Instruction Manual

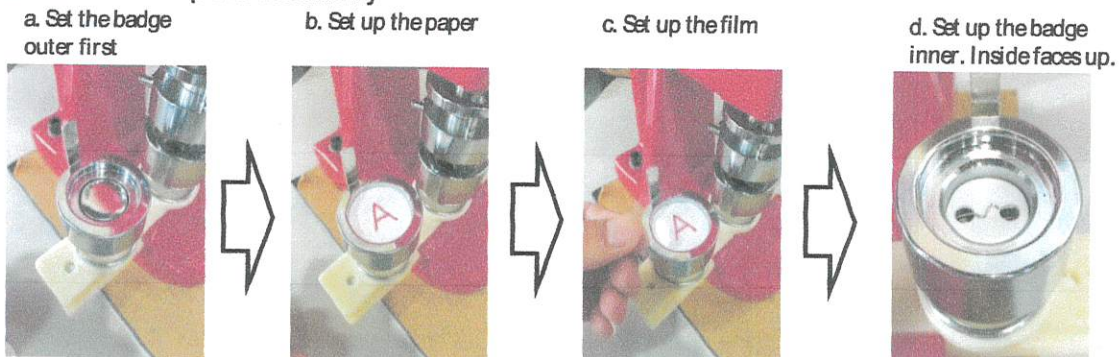
**STEP-1** Confirm the accessories, make sure you get all of them.



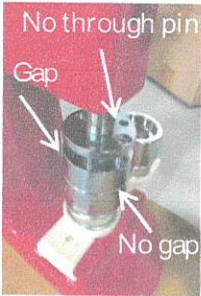
**STEP-2** Setup the mainbody



**STEP-3** Setup the mainbody



**STEP-4** Make badge



a. Push the handle. Make sure there is no gap at the lower place, and there is a gap at the higher place.  
**! NOTIⓈ**  
Pins do not through the whole!



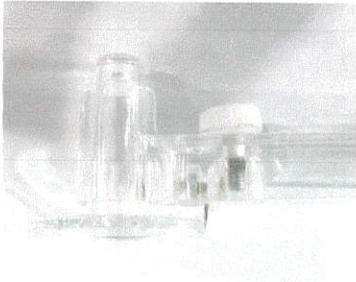
a. Move the base mold to the right side and push the handle. There is no gap between molds.  
**! NOTIⓈ**  
Pins do through the whole!

**USE TIPS**

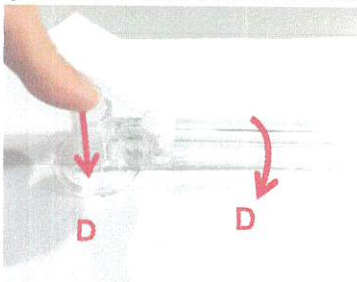
ETHow to use circle cutter



a. Adjust the cutter to the edge of round plate and fix it.



b. Press the axis of the round plate and turn around the cutter.



ETWhen should you use the big hexagonal wrench

The bigger hexagonal bolts are inside the both molds. Normally you don't need to adjust them only use the wrench when they are loosen.



Hexagonal bolt inside

If you want to adjust these 2 stoppers to get the correct position, you can rotate the base mold itself by hand.